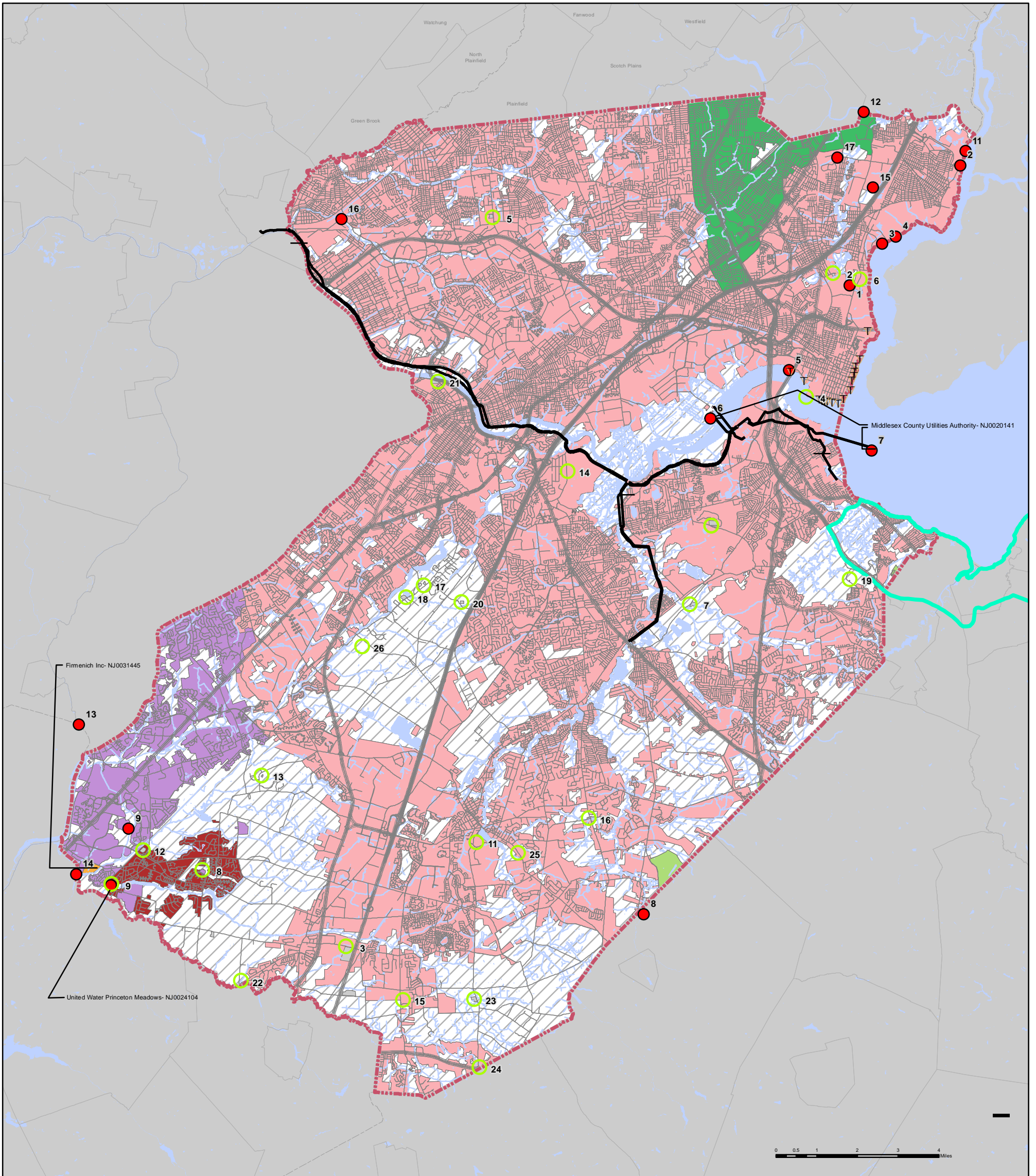


Map 3 Middlesex County Future Wastewater Service Area Map

Adopted by the New Jersey Department of Environmental Protection



- Legend**
- Future Service Areas of facilities that discharge to surface water**
- Fimnich SSA
 - Middlesex County Utilities Authority
 - Pine Brook STP
 - Rahway Valley Sewage Authority
 - Stony Brook RSA - River Road STP
 - United Water Princeton Meadows
 - Future Area To Be Served By Individual Septic Systems (<2,000 gpd)
 - Future Service Areas of facilities that discharge to groundwater
 - NJPDES Permitted Surface Water Discharge Locations
 - NJPDES Permitted Groundwater Discharge Locations

- Area outside WMP
- Coastal Area Facility Review Act (CAFRA)
- Combined Sewer Overflows
- Pump Station
- Trunk/Interceptor Sewers
- Major Roads
- Roads
- Surface Water
- Middlesex County
- Municipal Boundaries
- County Boundaries

"Locations of future pump stations, major interceptors, and trunk sewers are being provided for general information only and will not serve as the basis for any future consistency determinations or permit reviews unless the pump station, major interceptor or trunk sewer is part of a State or federally funded project."

"Pursuant to N.J.A.C. 7:15, Riparian zones are: 300 feet from top of bank (or centerline of a first order stream where no bank is apparent) for waters designated as Category One and all upstream tributaries within the same HUC 14; 150 feet for waters designated Trout Production and all upstream waters; 150 feet for water designated Trout Maintenance and all upstream waters within one linear mile as measured along the length of the regulated water; 150 feet for any segments of water flowing through an area that contains documented habitat for a threatened or endangered species of plant or animal, which is critically dependent on the surface water body for survival, and all upstream waters (including tributaries) within one linear mile as measured along the length of the surface water body; 150 feet for waters that run through acid-producing soils, and; 50 feet for all waters not designated as C1, trout waters, critically water dependent Threatened and/or Endangered Species Habitat, or associated with acid soils."

"Surface waters that are designated Category One are listed in the Surface Water Quality Standards at N.J.A.C. 7:9B. The Department's "Surface Water Quality Standards" GIS data layer was utilized to determine these waters. The applicable 300 foot buffer has been applied to these waterways and removed from the proposed sewer service areas on the mapping. Lesser width buffers have not been graphically removed from the sewer service area but are not proposed for sewer service. Jurisdictional determinations by the Department will be utilized to determine the extent of the sewer service area on individual lots."

"All existing, new, or expanded industrial pretreatment facilities requiring Significant Indirect User (SIU) permits and/or Treatment Works Approvals, and which are located within the depicted sewer service area, are deemed to be consistent."

"Pre-existing grant conditions and requirements (from Federal and State grants or loans for sewerage facilities) which provide for restriction of sewer service to environmentally sensitive areas, are unaffected by adoption of this document and compliance is required."

"Development in areas mapped as wetlands, flood prone areas, suitable habitat for endangered and threatened species as identified on the Department's Landscape Maps of Habitat for Endangered, Threatened and Other Priority Wildlife as Rank 3, 4, and 5, Natural Heritage Priority Sites, riparian zones, steep slopes, or designated river areas may be subject to special regulation under Federal or State statutes or rules, and interested persons should check with the Department for the latest information. Any depiction of environmental features shall be for general information purposes only, and shall not be construed to define the legal geographic jurisdiction of such statutes or rules"

"Areas located within the watershed of a Freshwater One (FW1) stream, as classified in the Surface Water Quality Standards, and/or that have Class 1-A ground water (Ground Water of Special Ecological Significance), as classified in the Ground Water Quality Standards, are identified as "Non-degradation water area based on the Surface Water Quality Standards at N.J.A.C. 7:9B, and/or the Ground Water Quality Standards at N.J.A.C. 7:9-6." Non-degradation water areas shall be maintained in their natural state (set aside for posterity) and are subject to restrictions including, but not limited to, the following: 1) DEP will not approve any pollutant discharge to ground water nor approve any human activity which results in a degradation of natural quality except for the upgrade or continued operation of existing facilities serving existing development. For additional information please see the Surface Water Quality Standards at N.J.A.C. 7:9B, and/or the Ground Water Quality Standards at N.J.A.C. 7:9-6."

Item	Ground Water Discharge Facility	NJPDES Permit No.
1	De Pont Paris Waco/Paris/El Du Pont De Nemours	NJ000079
2	Cutlers Dock Properties LLC	NJ0001295
3	Sea Station Inc	NJ0003079
4	Co Steel Baritan (Alca Company Steel Baritan)	NJ0001178
5	Eniro Corp	NJ0004825
6	Motiva Enterprises LLC - Sewerage Terminal/	NJ0007488
7	Rayway Wp	NJ0005679
8	Malden's At Middlesex	NJ0008819
9	United Water Princeton Meadows	NJ0009711
10	De Pont Paris Waco/Paris	NJ0010223
11	Thompson County Park	NJ0127295
12	Princeton Alliance Church The	NJ0131679
13	South Brunswick Twp	NJ0134271
14	Middlesex County Landfill (Phase II Landfill)	NJ0139276
15	Mapleburgh Farm	NJ0208169
16	Landmark Marine LLC	NJ0210362
17	1151 Mtny	NJ0210978
18	Alvaco Camp	NJ0211381
19	Reeseville	NJ0213221
20	Assembly Of God	NJ0215639
21	Bohannon C/O	NJ0215687
22	Caribay Swim Club	NJ0216345
23	Stony Brook Sea - River Road	NJ0216361
24	Miller's American Bar & Grill	NJ0216396
25	United Haven Rest Home (Ala Bedtime Manor)	NJ0217438
26	Mt Road Day Camp	NJ0202075

Item	Surface Water Discharge Facility	NJPDES Permit No.
1	Blacktop Perth Amboy Terminal/Chevron Usa	NJ0000221
2	3rd Performance Products	NJ0000248
3	Pho&G - Sewerage G S	NJ0000680
4	Blacktop Port Bouldin Terminal	NJ0001381
5	Blacktop First Reserve Terminal LLC	NJ0001392
6	Middlesex County Usa	NJ0001411
7	Middlesex County Usa	NJ0002141
8	Western Middewatch Usa	NJ0002228
9	US Department Of Energy	NJ0023922
10	Princeton Meadows Sp	NJ0024184
11	Rahway Valley Sp	NJ0024643
12	Rahway Valley Sa	NJ0024643
13	Stony Brook Sea - River Road	NJ0024643
14	Fimnich Inc	NJ0024643
15	Colonial Pipeline Co Linden Junction Tank Farm	NJ0024643
16	Union Carbide Ch & Pl Co	NJ0024643
17	Woodbridge Developmental Center	NJ0024643

Submitted by: George Ververides, PP, AICP, Planning Director on behalf of the Middlesex County Board of Chosen Freeholders as Wastewater Planning Agency.
Address: 75 Bayard Street, New Brunswick, NJ 08901
Tel.: Alex Zakrewsky (732) 745-3499
Fax: (732) 745-8443

Sources:
Sewer_Service_Area, NJDEP, 2016
Septic_Areas, MCPD, 2016
NJPDES Permitted Surface Water Discharge Locations: NJDEP, MCPD, 2016
NJPDES Permitted Groundwater Discharge Locations: NJDEP, MCPD, 2016

Area_outside_of_WMP, NJOIT, 2016
Coastal Area Facility Review Act (CAFRA): NJDEP, 2005
Combined Sewer Overflows: NJDEP, 2012
Pump Stations: NJDEP, 2016
Trunk/Interceptor Sewers: MCPD, 2010

Roads: NJDOT, 2010
Water: USGS, 2016
Municipal and County Boundaries: NJOIT, 2013

Map Adopted March 11, 2015
Amended January 15, 2016
Amended June 3, 2016