

PUBLIC MEETING # 1

Southern Middlesex County Freight Movement Study

December 7th, 2022



Agenda

- Presentation
 - Study Overview
 - Data Collection
 - Context
 - Infrastructure
 - Traffic Data
 - Next Steps
- Small Group Discussion



STUDY OVERVIEW



Project Team

Project Lead



Andrew Lappitt, PP/AICP, Project Manager
Doug Greenfeld, PP/AICP, Planning Director
Mike Dannemiller, PE, Supervising Engineer

Project Partner



William Long, Principal Planner,
Subregional Studies Program

Project Support



Alan Meyers,
Project Manager
Carlos Bastida,
Deputy Project Manager



Anthony Durante, AICP/RSP
Senior Associate



Ryan Walsh, AICP/PP
Community Engagement Manager
Hannah Brockhaus
Community Engagement Staff



Background

- Area has become a major growth and development location
- Recent increase and projected growth in truck traffic
- Industrial/warehouse hub around Interchange 8A
- 6.5+ million square feet of recent warehousing and more expected
- Surrounding roads are not designed for large trucks
- Congestion, travel delays, and crashes
- Negative environmental and quality of life impacts



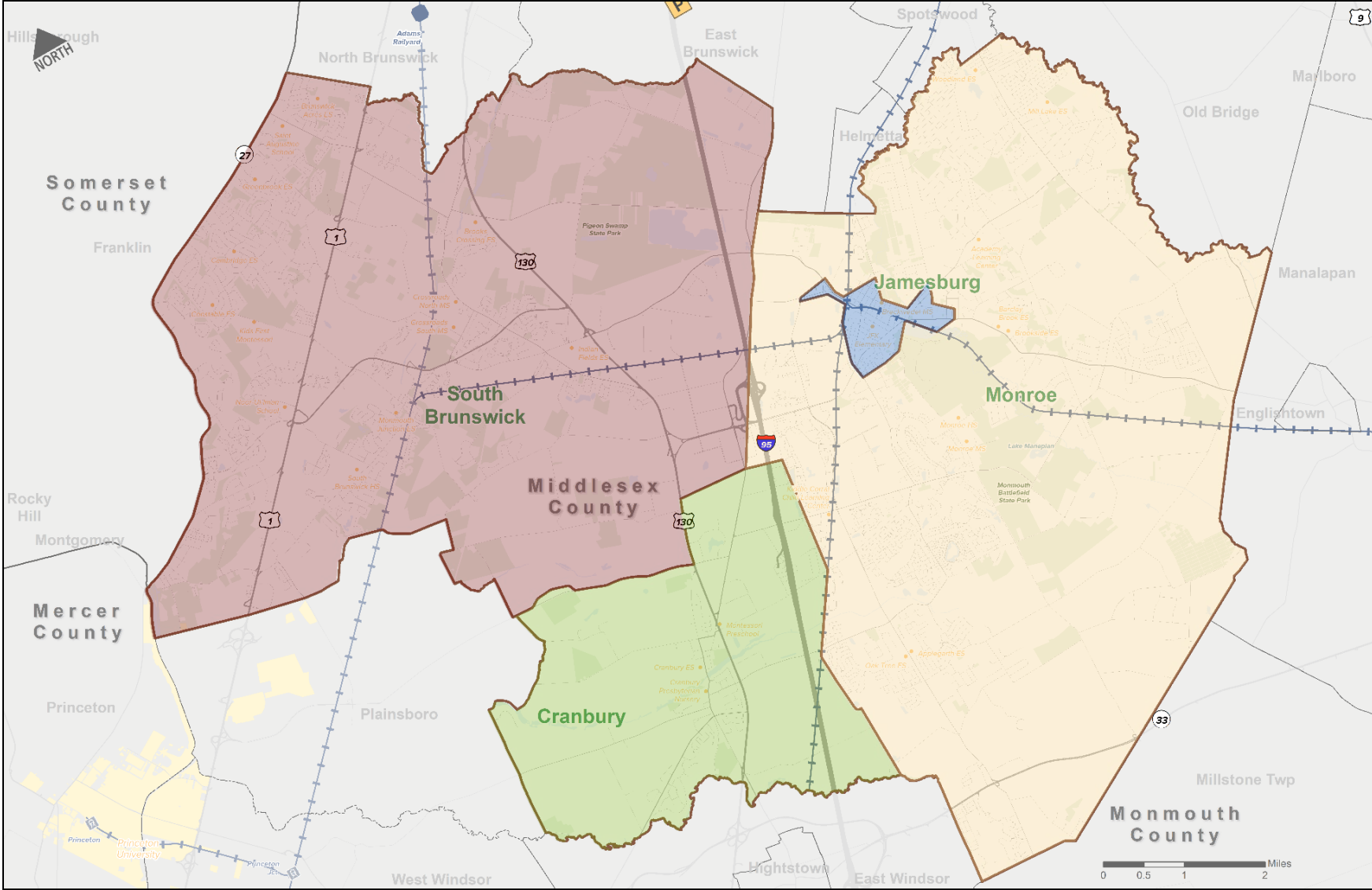
Goals of the Study

- **Foster collaboration** among municipal partners, private industry, and regional entities, and build consensus for study recommendations
- **Evaluate the existing transportation facilities** (road and rail) used for regional and local freight movement within, to, and from the Primary and Secondary Study Areas
- **Identify potential routing alternatives for trucks** to remove negative impacts to local communities within the Primary Study Area, avoiding sensitive areas
- **Identify potential improvements** to existing road and rail facilities to address congestion, safety, multi-modal mobility, accessibility, traffic operations, and impacts of regional traffic
- **Identify recommendations to improve job access** for logistics industry workers within the study area
- **Fairly distribute the benefits and burdens of study recommendations.** Avoid recommendations that cause a disproportionate burden on environmental justice communities



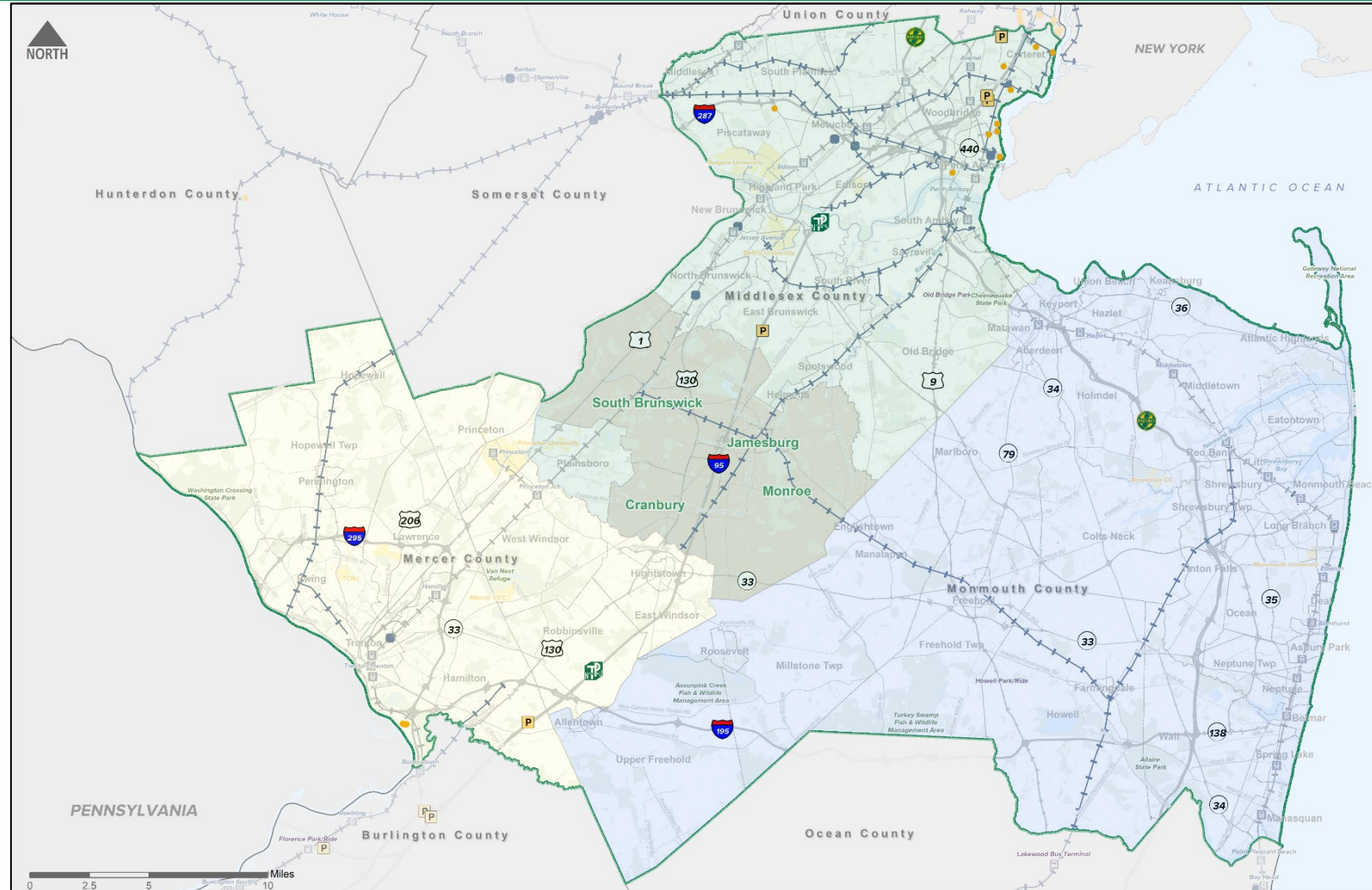
Primary Study Area

- Cranbury Township
- Jamesburg Borough
- Monroe Township
- South Brunswick Township

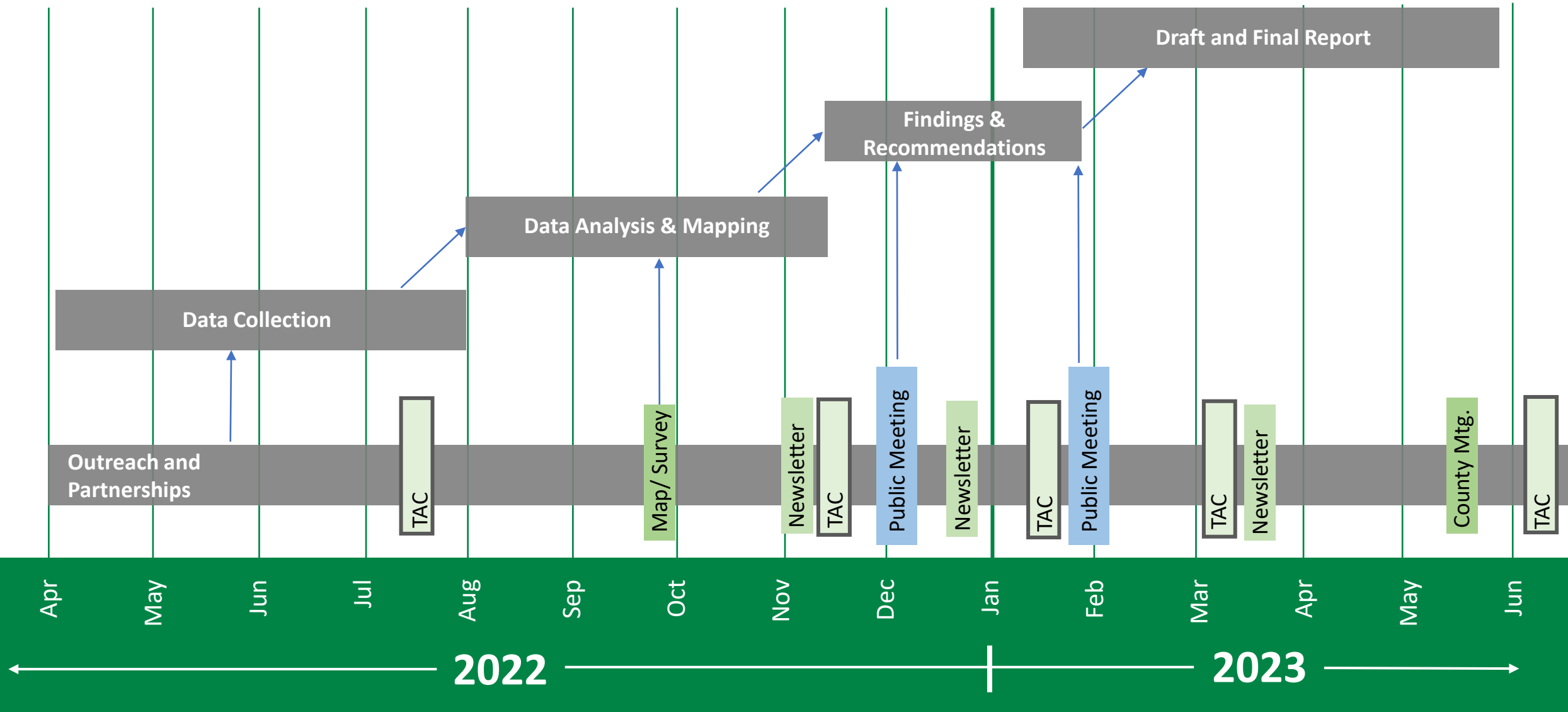


Secondary Study Area

- Remainder of Middlesex County
- Mercer County
- Monmouth County



Study Process and Schedule



Stakeholder Involvement

- Technical Advisory Committee
- Public Meetings
- Municipal Meetings
- Stakeholder Group Meetings
- Industry Interviews
- Website and Online Survey/Map
 - Map active for duration of project
 - Identify locations with concerns
 - Provide comments - >50 comments provided thus far
 - Plan to compile results within two weeks of today's meeting for use in recommendations



Survey/Map:
fhistudio-apps.com/smc-freight

Website: bit.ly/SMCFreight

Interactive Map

Think about freight issues within Southern Middlesex County and share your ideas on the interactive map. You can also view the feedback others have left.

Where is there a freight-movement-related issue in Southern Middlesex County?

Place a pin or line on the map where you know this issue exists. You can zoom in to get a better look if necessary. You can add as many pins or lines as you want.

Address Search

Search...

Legend

- Primary Study Area
- Secondary Study Area

Please use and share these links widely!!!



DATA COLLECTION



Data Collection Summary

- Goal: understand basic conditions, issues, and potential opportunities
- Reviewed relevant documents and previous studies
- Assembled data from local, regional, state, national sources
 - Land use and sociodemographic
 - Infrastructure and signage
 - Traffic volumes, types, origin-destinations, safety
 - Transit (mainly bus/shuttle) connections to employment centers
- New data – truck classification counts, Streetlight and Replica truck data



Policy Documents and Previous Study Review

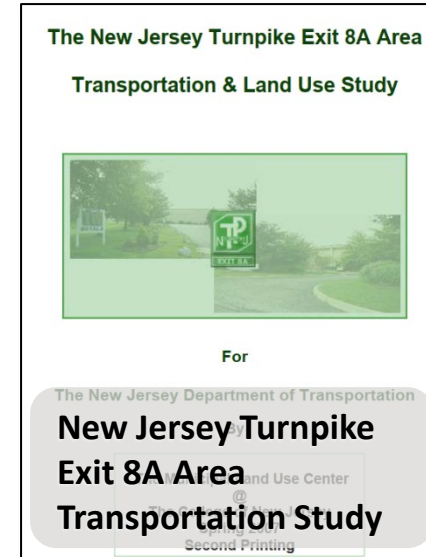
- 15 local, regional, and state plans, studies and policies
- Discover and review previous work completed, existing constraints and issues, and varying perspectives



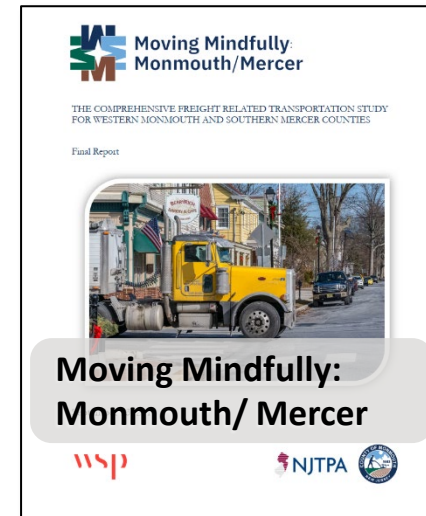
Provides insight into the interests and visions of communities



Review height restrictions in Primary and Secondary Study Areas



Identified three competing perspectives and needs of stakeholders



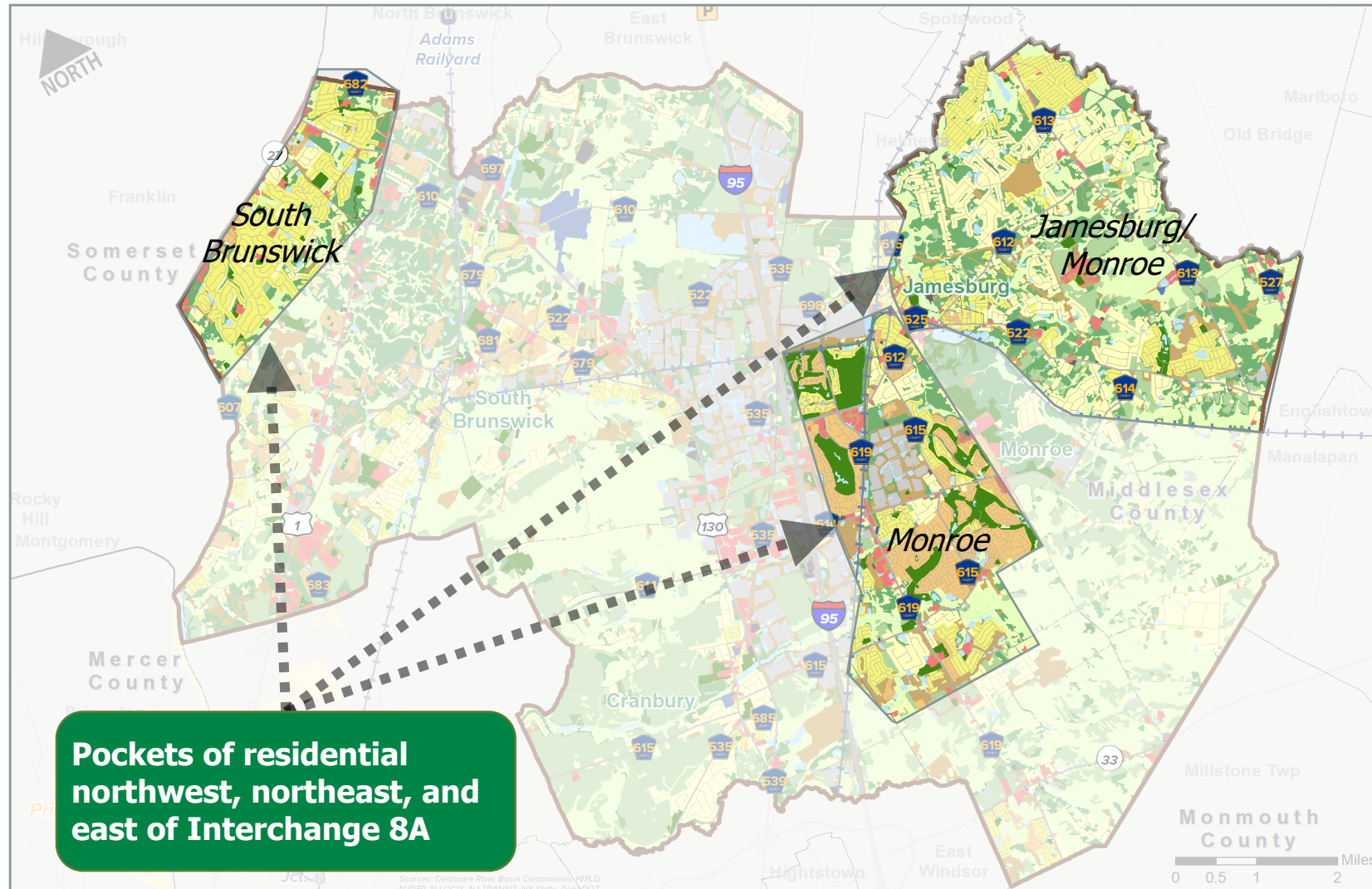
Focused on communities with a similar diversity of interests and relationships to freight



Land Use – Residential

Forest & Agriculture mixed with pockets of

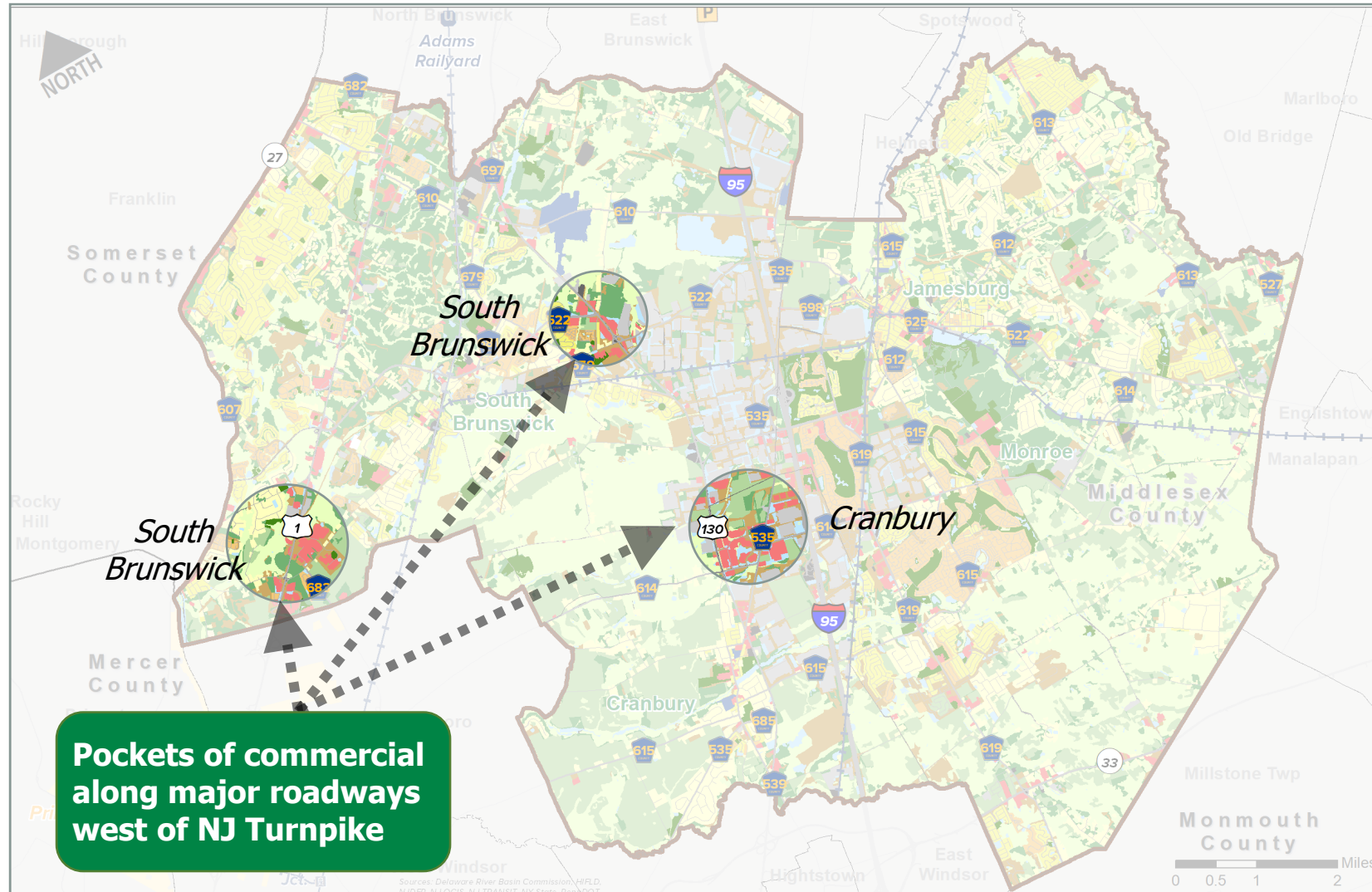
- Residential
- Commercial
- Industrial



Land Use – Commercial and Industrial

Forest & Agriculture mixed with pockets of

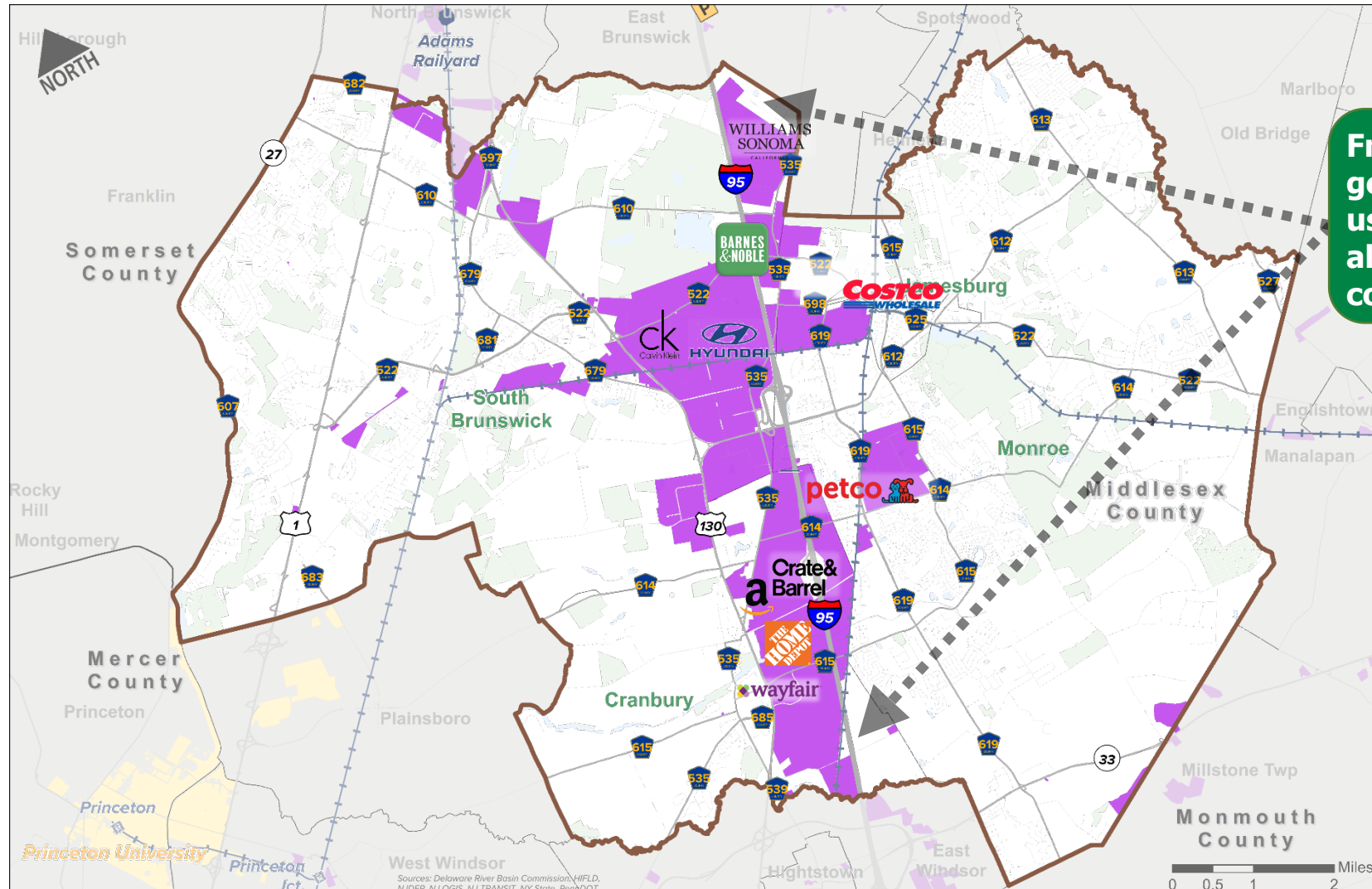
- Residential
- Commercial
- Industrial



Land Use – Freight Clusters

Freight-generating land uses along

- NJ Turnpike
- U.S. 130
- Freight Rail

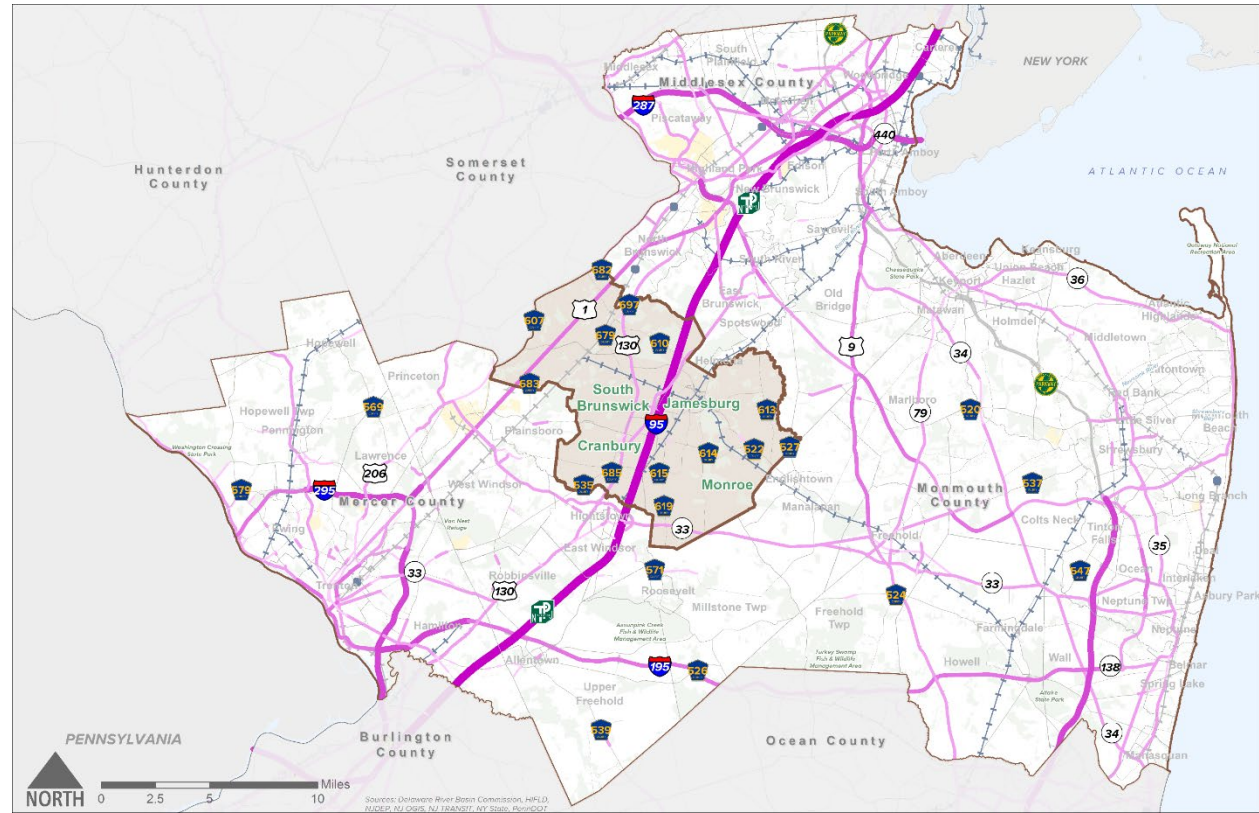
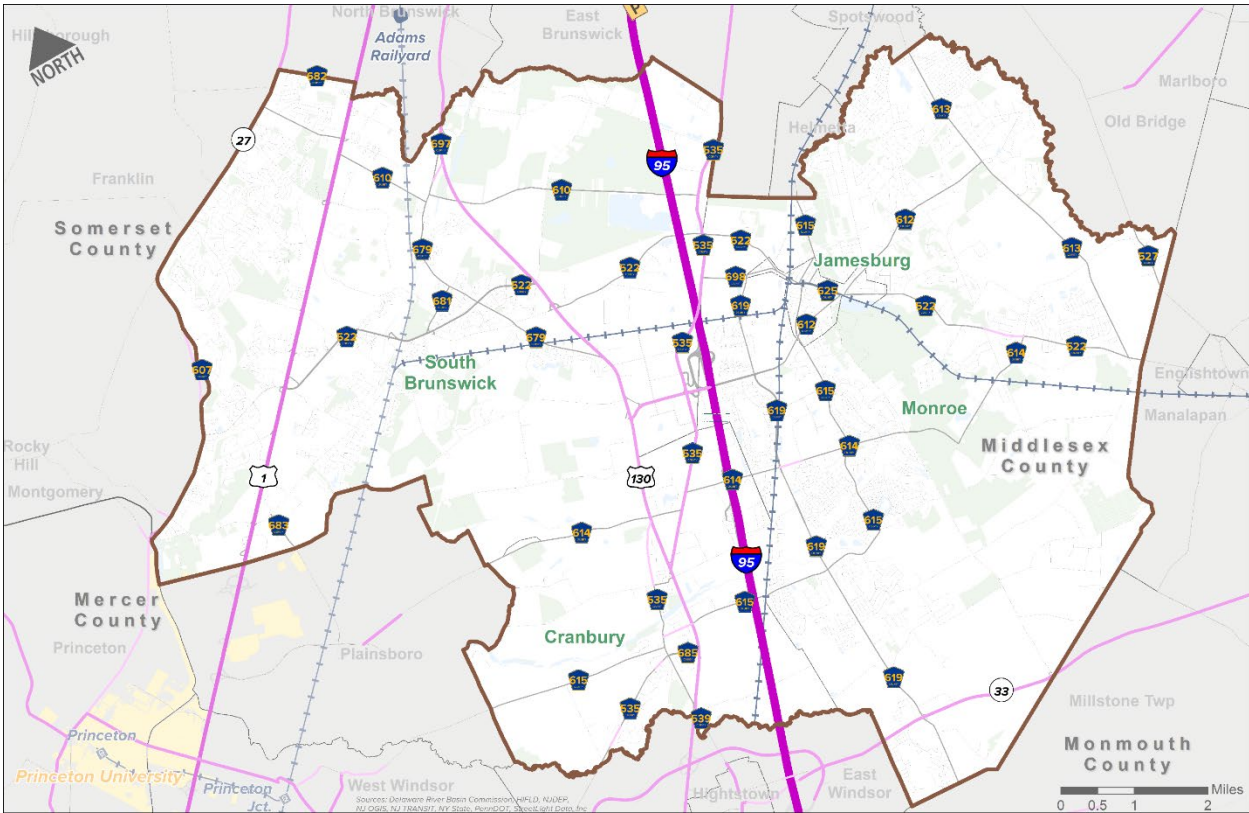


Freight-generating land uses centered along Turnpike corridor

Identified Industrial Clusters

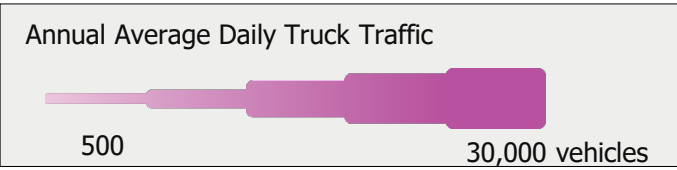


Truck Traffic



Highest volumes

- Turnpike
- U.S. 130
- U.S. 1



Highest volumes

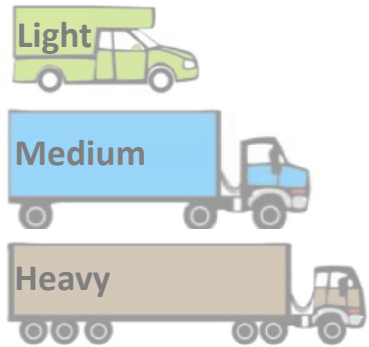
- Turnpike
- Interstates
- Parkway



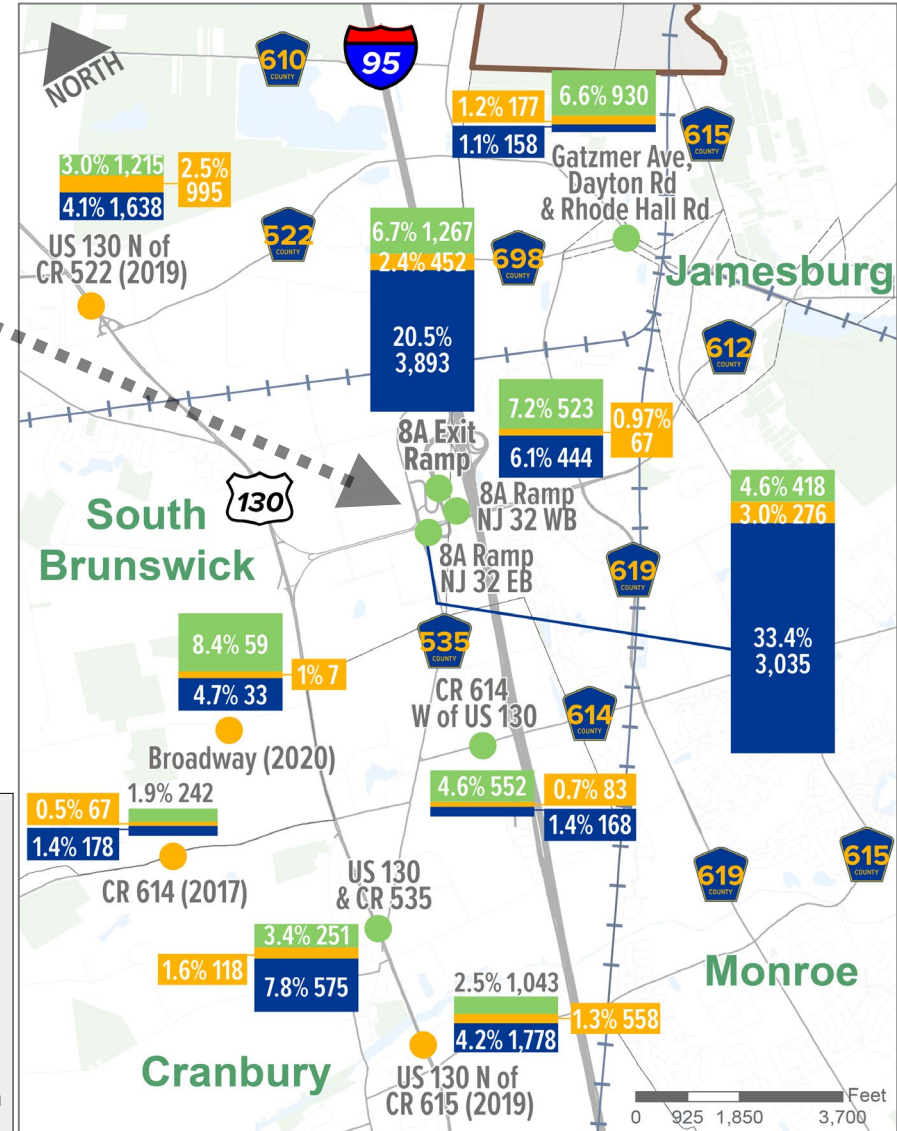
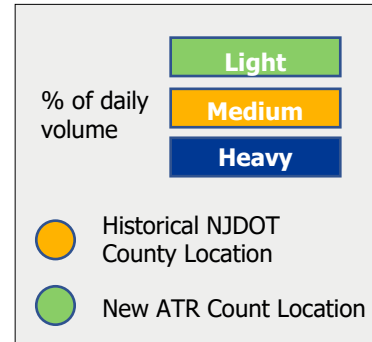
Truck Traffic

- Obtained 12 recent volume counts in Primary Study Area
- Conducted 11 additional classification intersection counts and six mid-block counts

Truck Classification

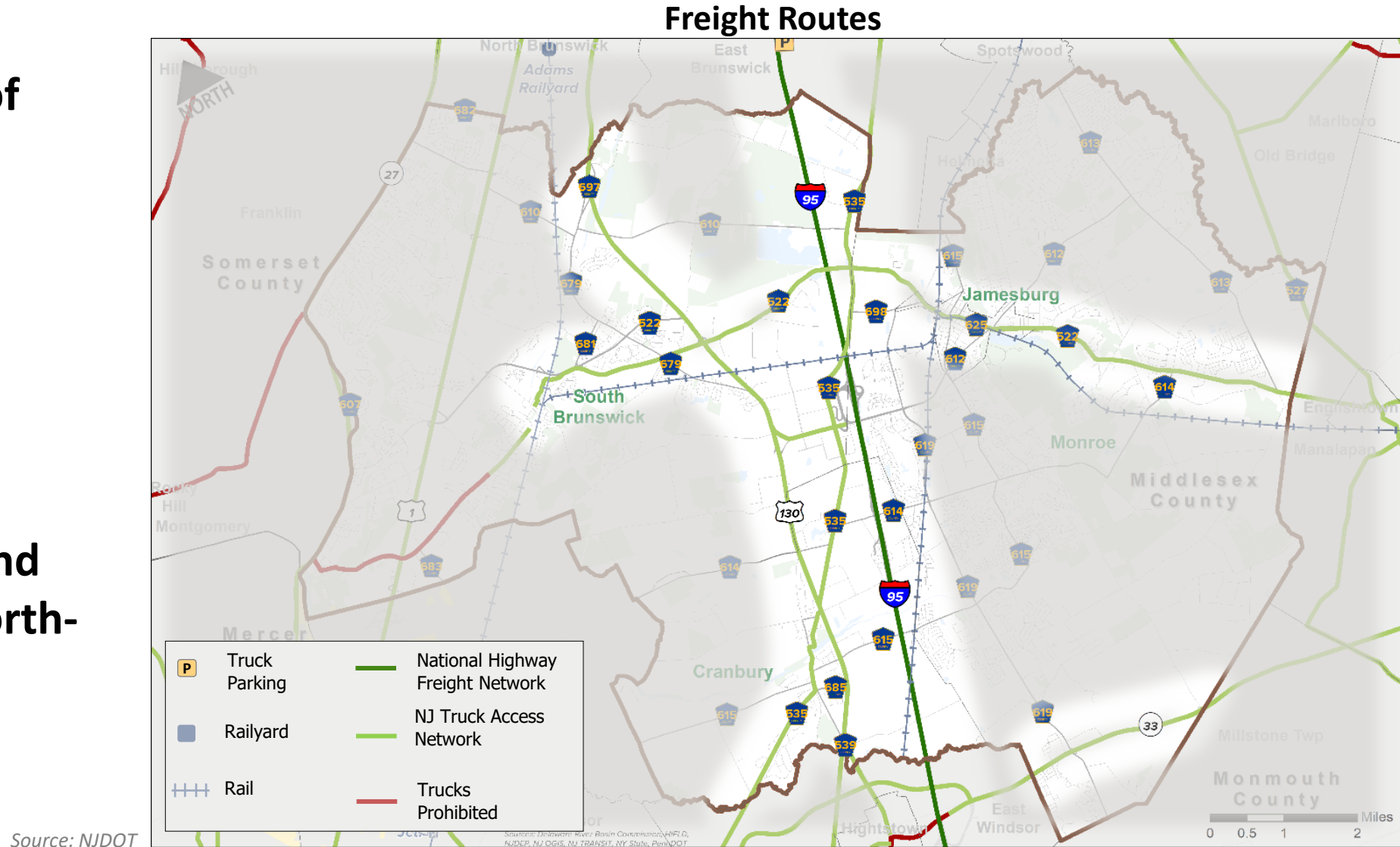


High truck volumes consistently found around Interchange 8A



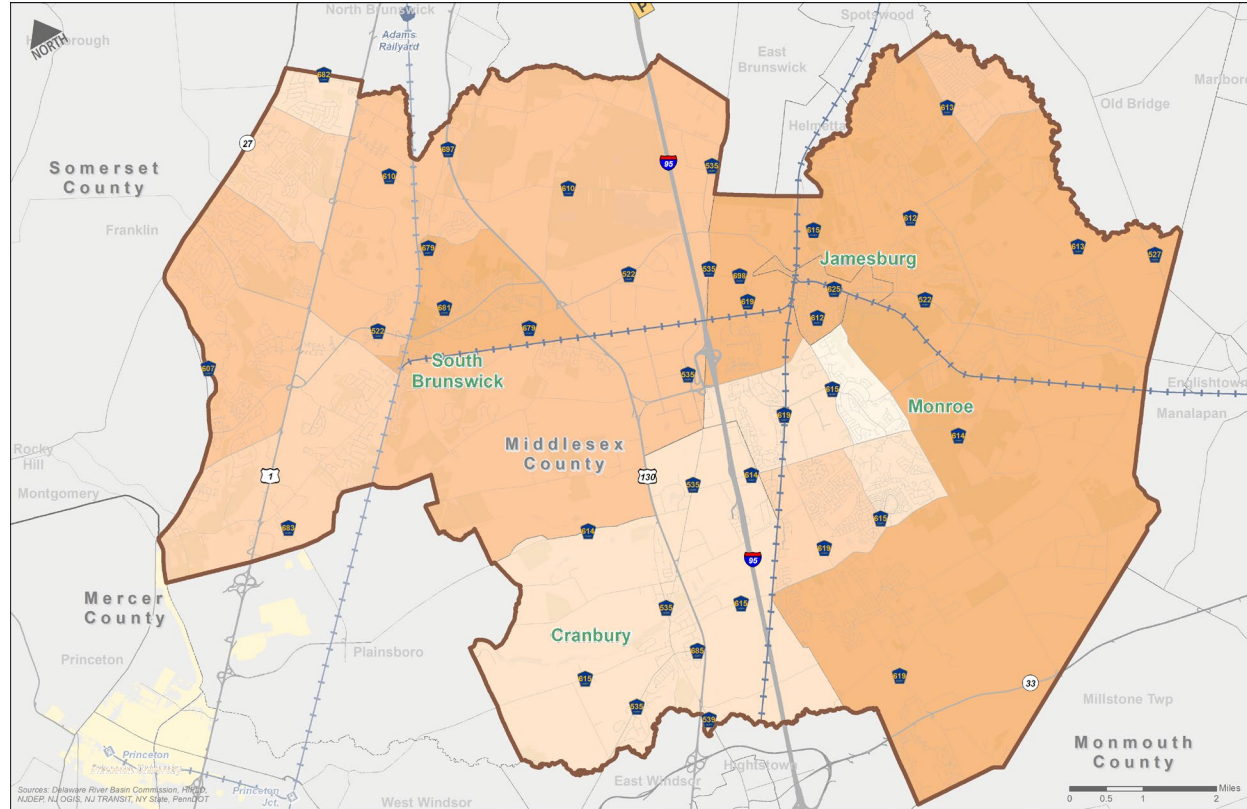
Truck Routes

- NJ Turnpike part of National Freight Network
- CR 522 and SR 33 provide east-west access
- U.S. 1, U.S. 130, and CR 535 provide north-south access



Commuters to Freight Industry Jobs in the PSA

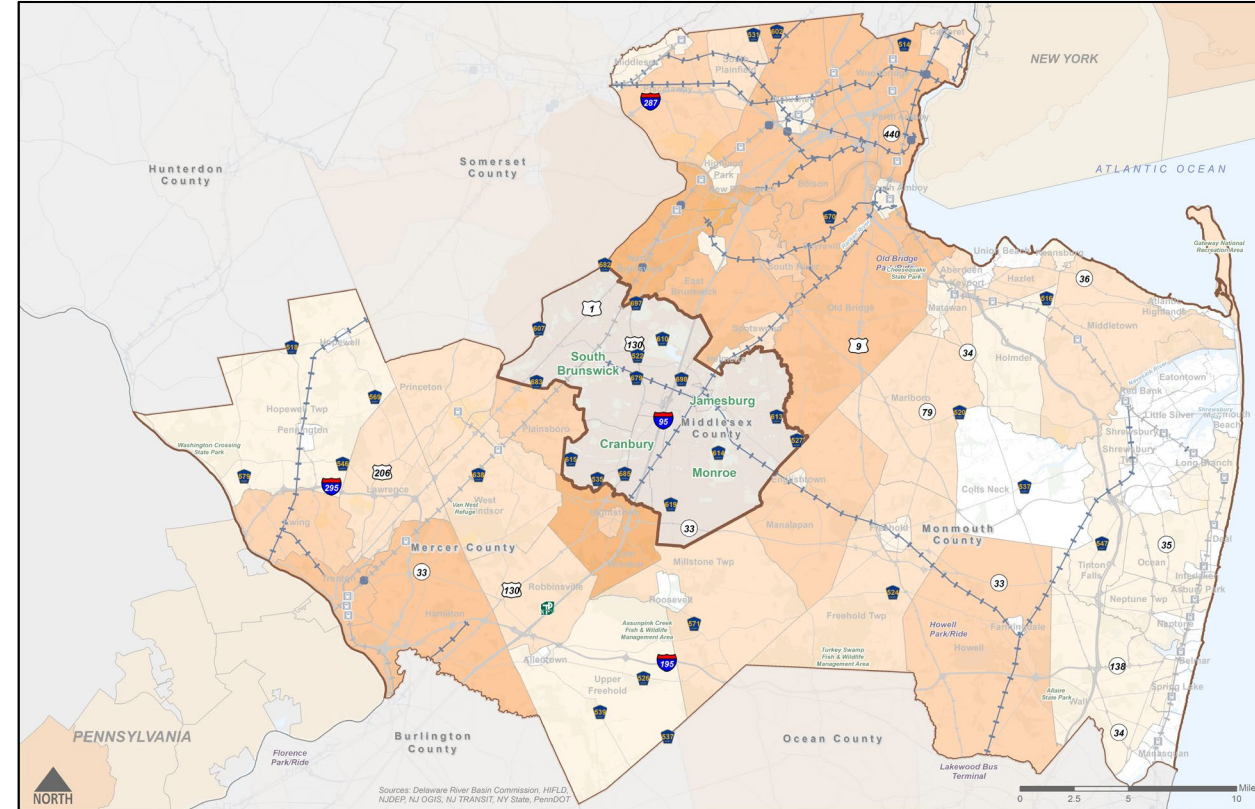
Internal Commuting to Freight Industry Jobs



Commuters to Primary Study Area - Home Location



Commuting to Freight Industry Jobs from the SSA



Commuters to Primary Study Area – Home Location



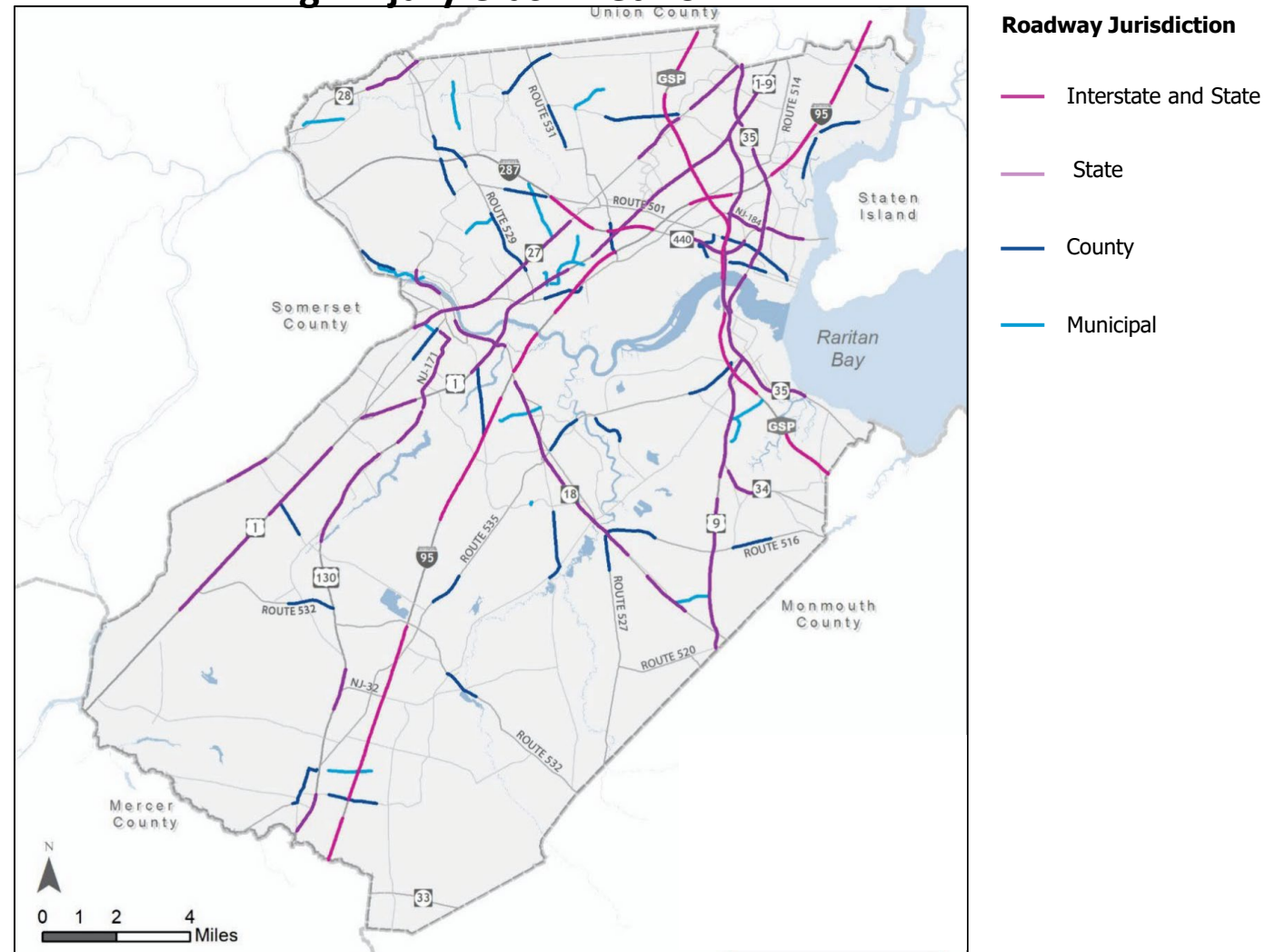
Sources: Middlesex County, NJDOT, NJ TRANSIT, U.S. Census *OnTheMap*



Safety – High Injury Network

- Weighted high injury network published as part of Middlesex County’s Vision Zero Action Plan in 2021
- High injury roadways in Primary Study Area include:
 - New Jersey Turnpike
 - U.S. Routes 1 and 130
 - County Routes 532, 535, and 615
 - Cranbury-Half Acre Road

High Injury Crash Network



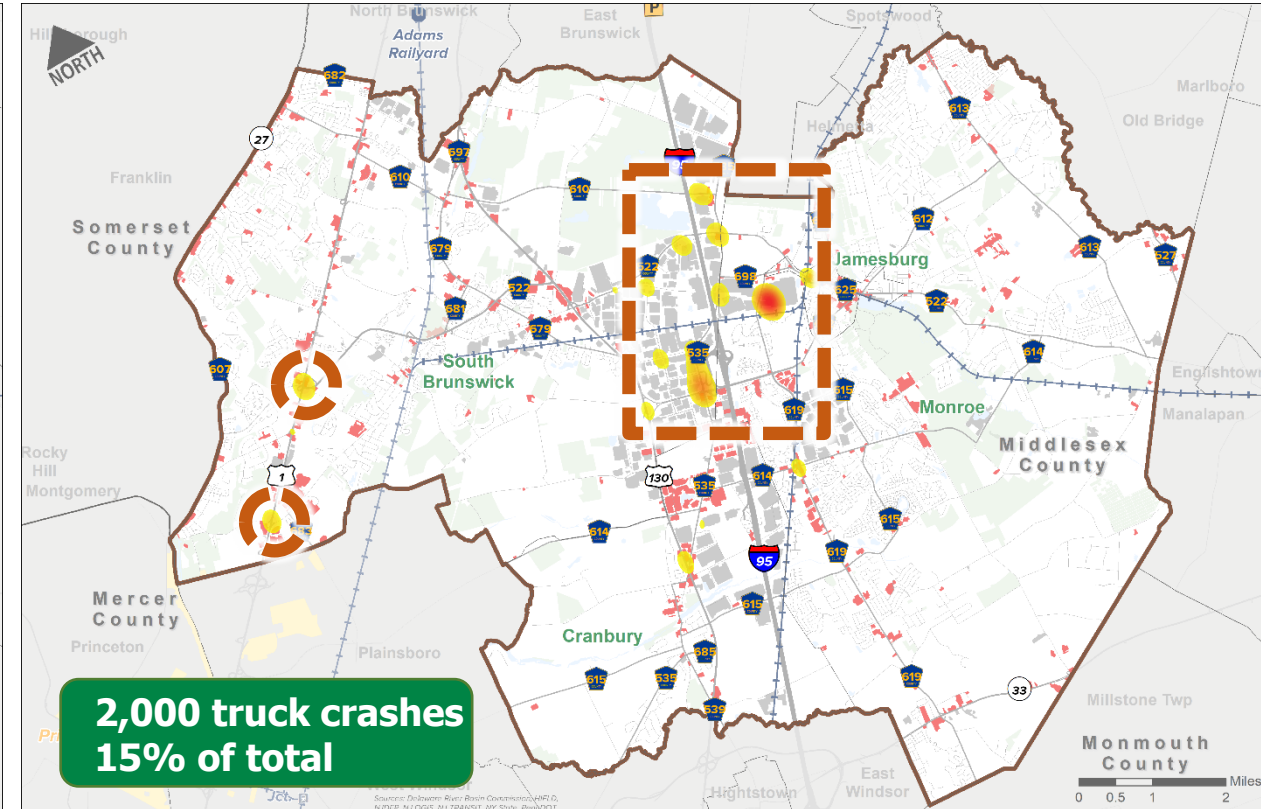
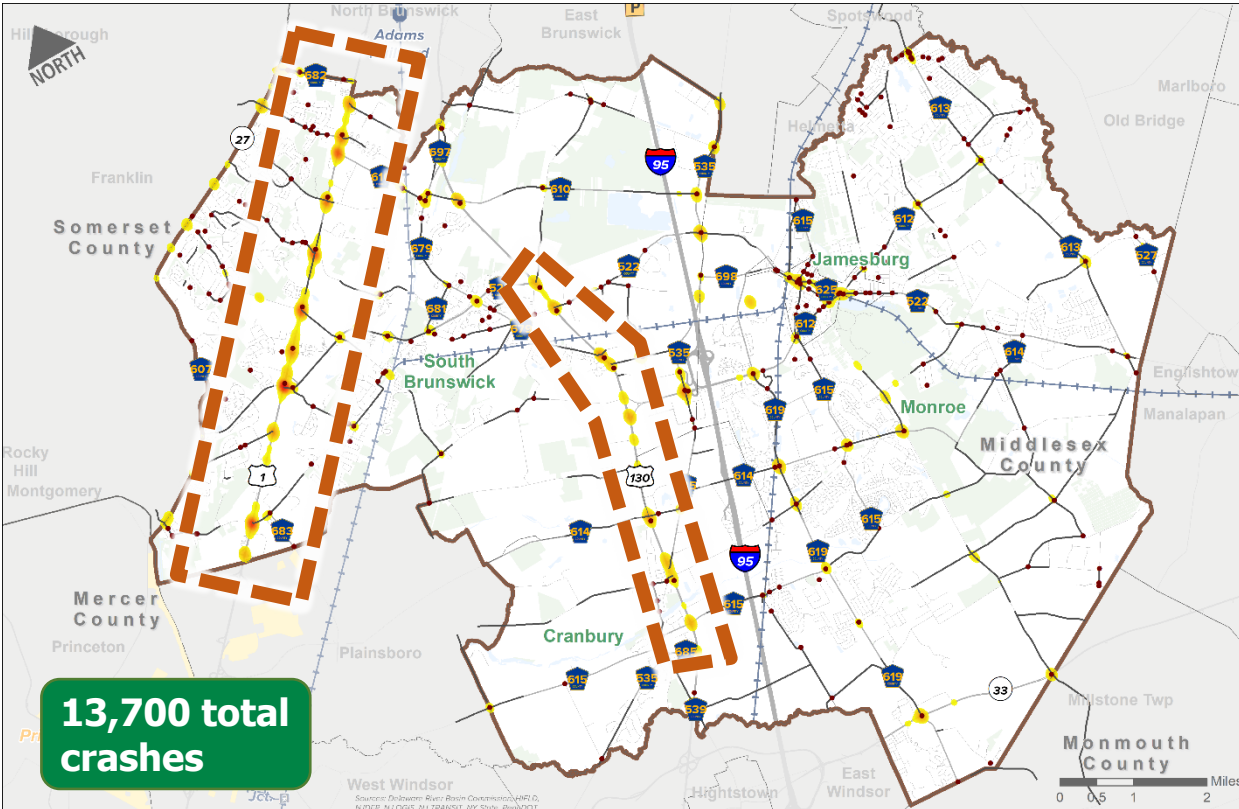
Sources: NJDOT



Safety

Crash Hotspots – All Crashes

Crash Hotspots – Truck-Involved Crashes



Crash Density

Higher (Red/Orange gradient)
Lower (Yellow/White gradient)

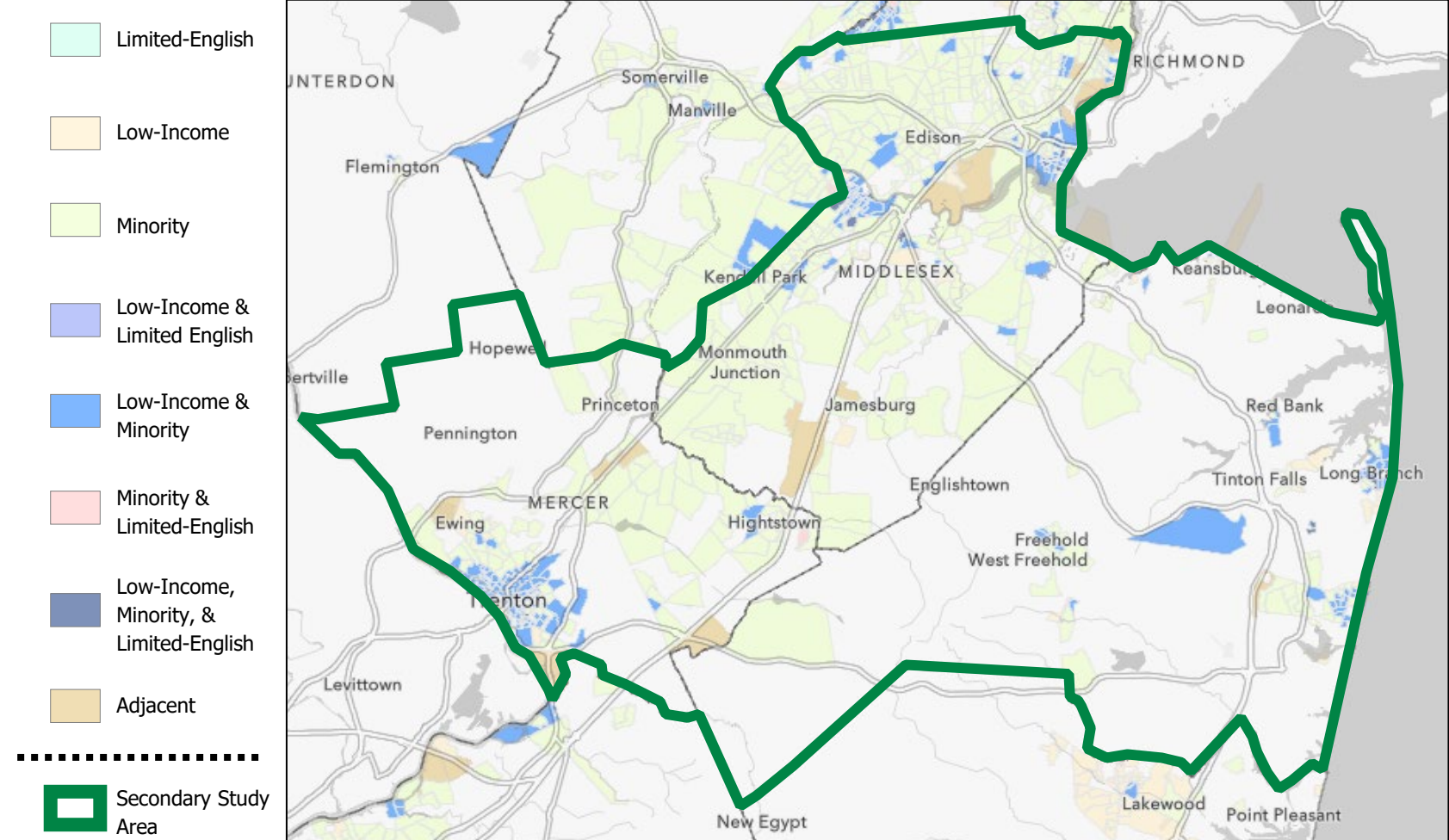
- Network Screening List
- Network Screening List Intersection
- Ⓟ Truck Parking
- Commercial
- Industrial

Source: NJDOT, 2016-2020



Socio-demographic/Equity Analysis

- Minority populations found throughout Middlesex and Mercer counties
- Low-Income/Minority communities found in urban areas of Middlesex, Mercer, and Monmouth counties



Source: New Jersey Environmental Justice Law, 2020, NJDEP



NEXT STEPS



Next Steps

- Complete the data analysis & mapping
- Compile online map/survey results
- Complete stakeholder and industry meetings
- Advance into recommendations



SMALL GROUP DISCUSSION



Small Groups

- We want to get as much feedback from you as possible
- Maps are available for each group
- Use markers and Post-its to tell us about **problems** and suggest potential **solutions**



Ronald G. Rios, *Director*
Shanti Narra, *Deputy Director*
Claribel A. Azcona-Barber
Charles Kenny
Leslie Koppel
Chanelle Scott McCullum
Charles E. Tomaro



Thank You

- How to stay involved:



Survey/Map:

fhistudio-apps.com/smc-freight

Website: bit.ly/SMCFreight

