

Figure 1. Contemporary road map showing New Brunswick in relation to Perth Amboy and Burlington, New Jersey's early legal entry ports. Vol. 1, pg. 19.

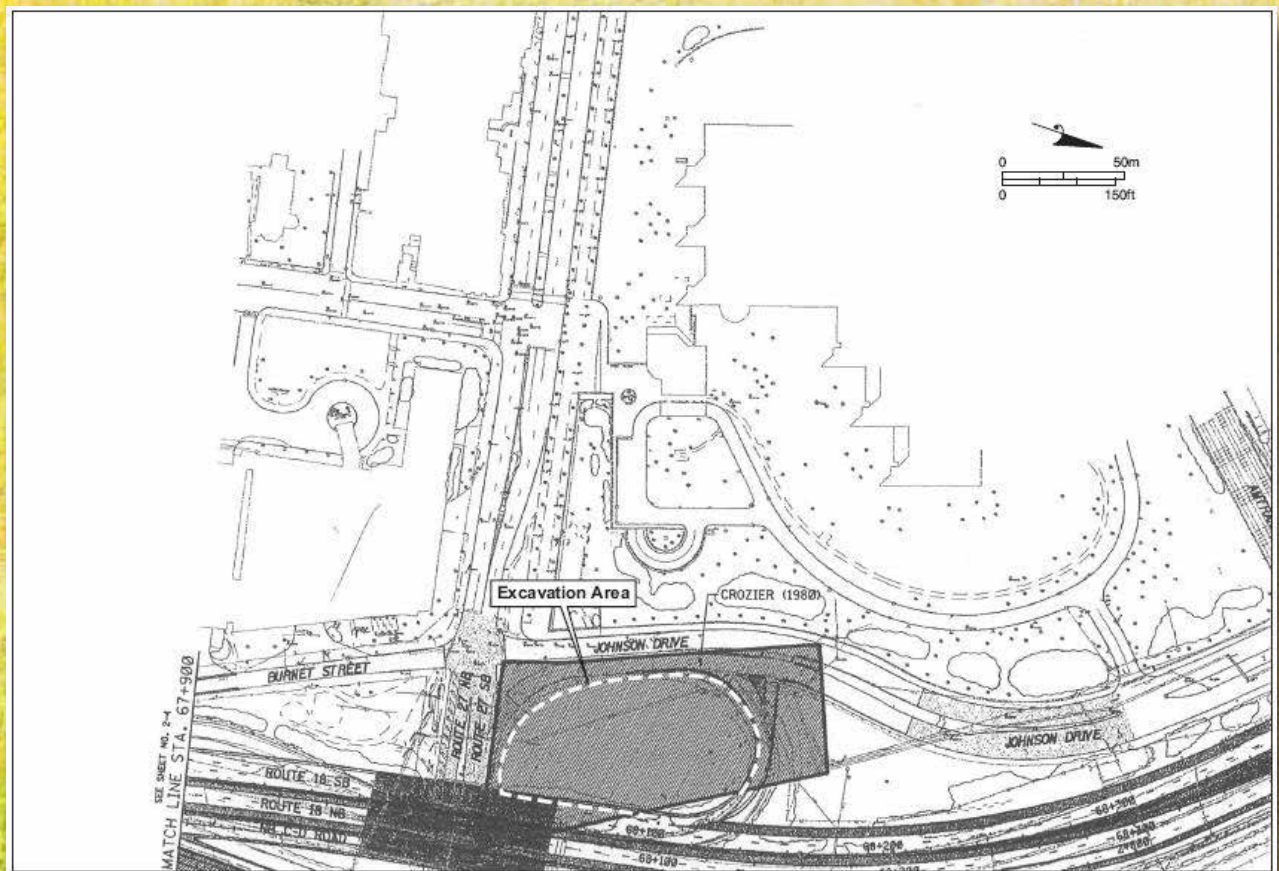


Figure 2. Route 18/27 Interchange Project Area. Vol. 1, pg. 20.

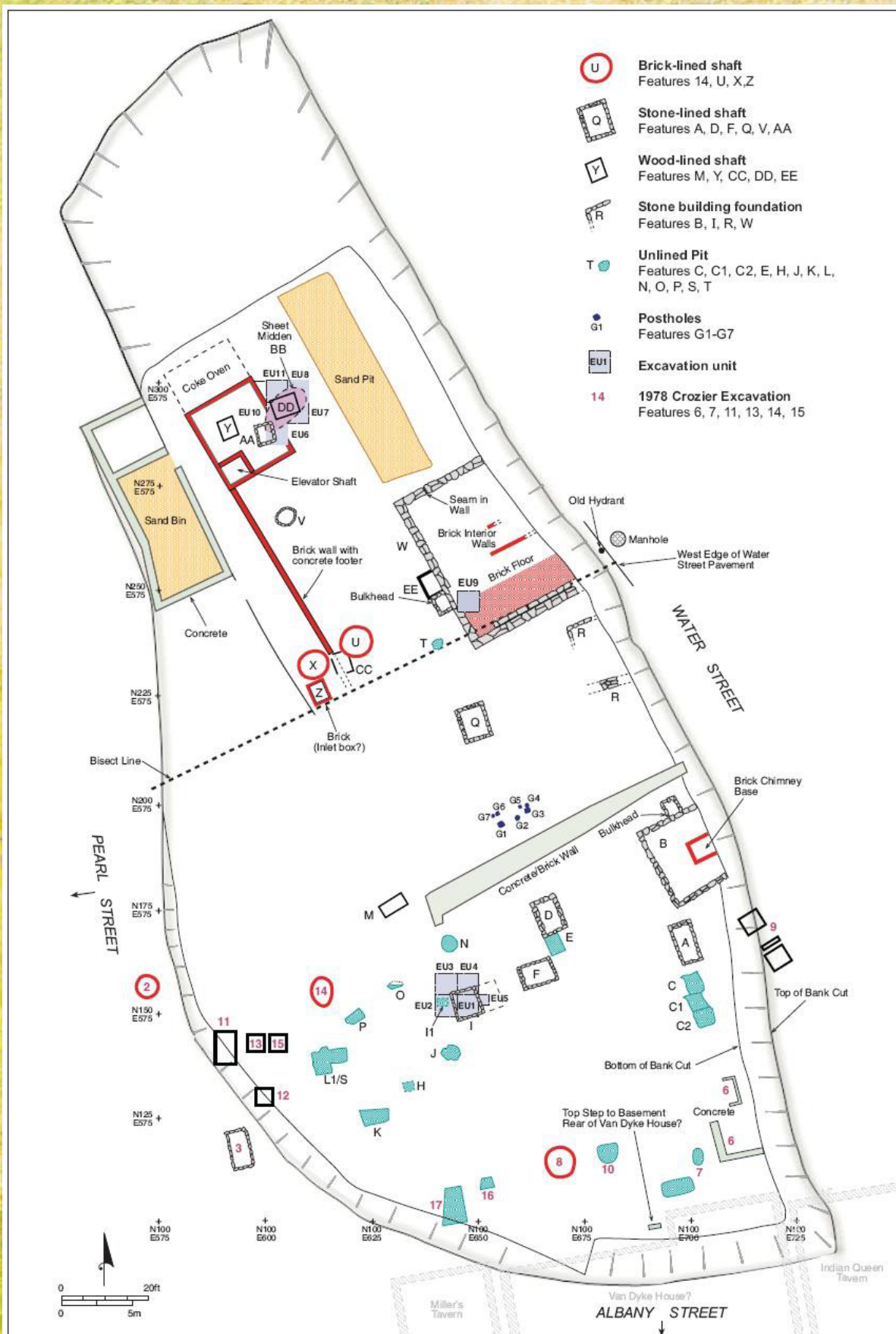


Figure 4. John Milner Associates site map, 2003. Vol. 1, pg. 22.

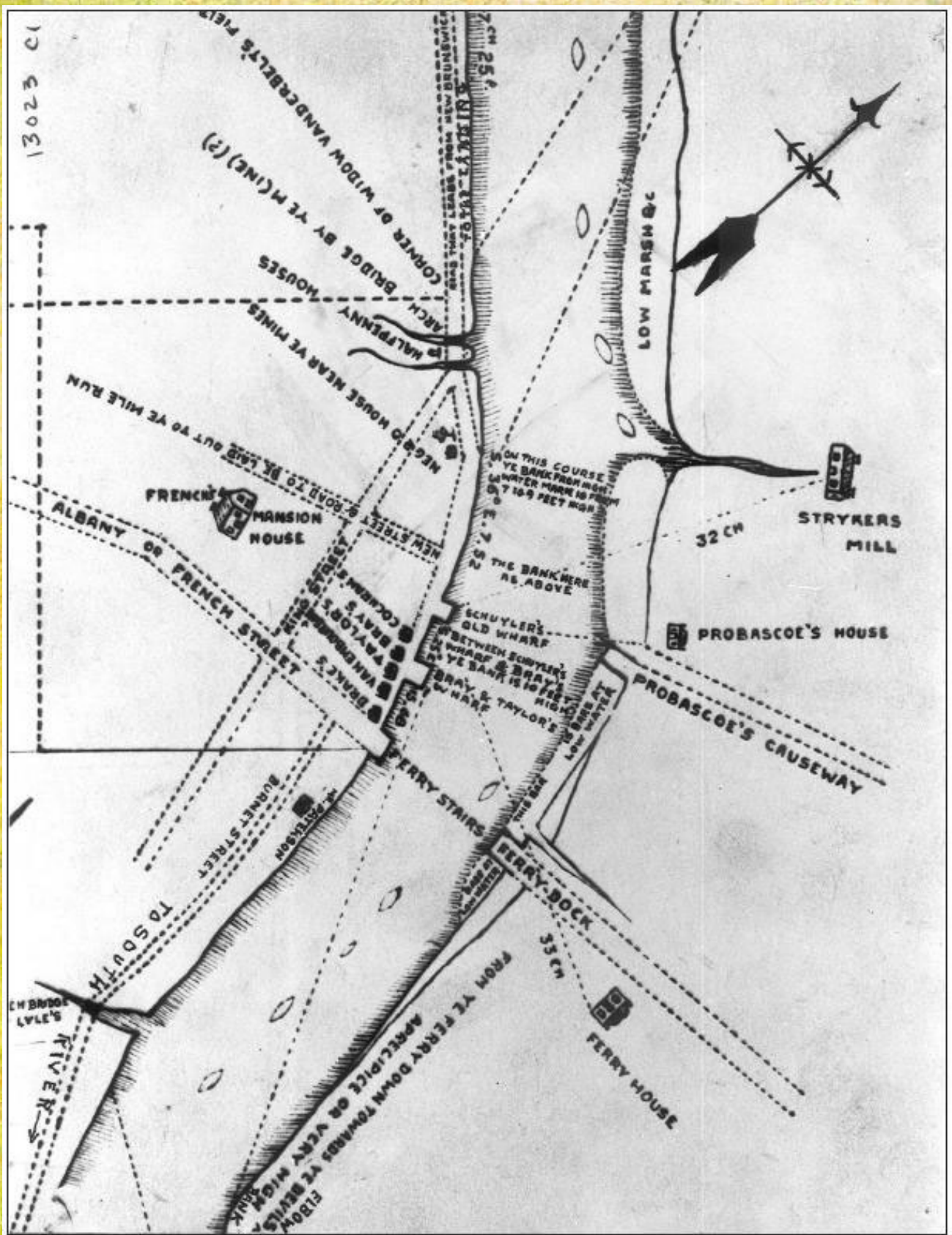


Figure 6. Detail, *French's Patent or Manning's Survey*, 1790, showing project area. French/Manning 1790, reprinted in Kolva and Pisciotta 1999. Vol. 1, pg. 35.

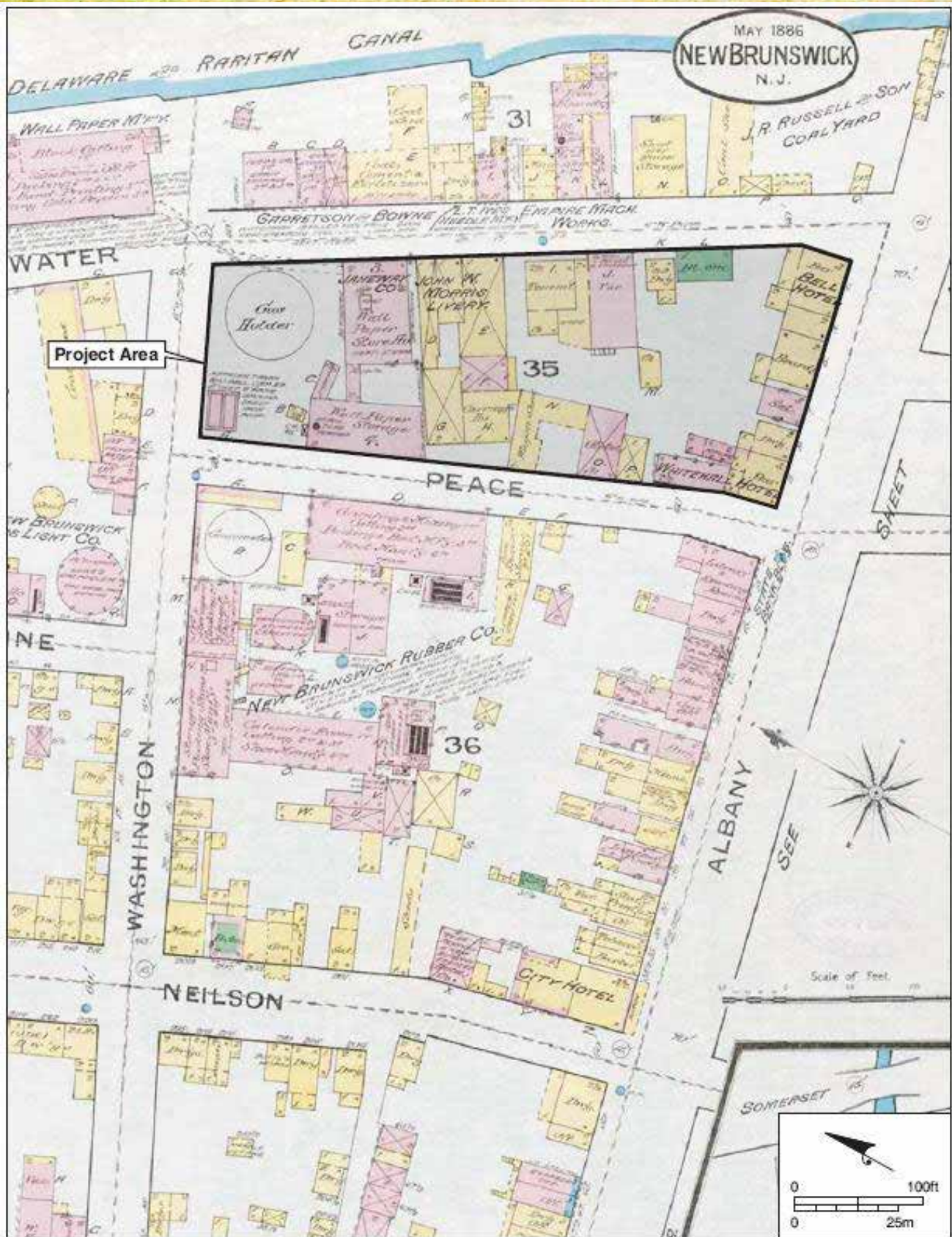


Figure 8. Detail, New Brunswick, N. J. From *Insurance Maps of New Brunswick, New Jersey*, Plate 6. Sanborn Map Company, 1886). Vol. 1, pg. 40.

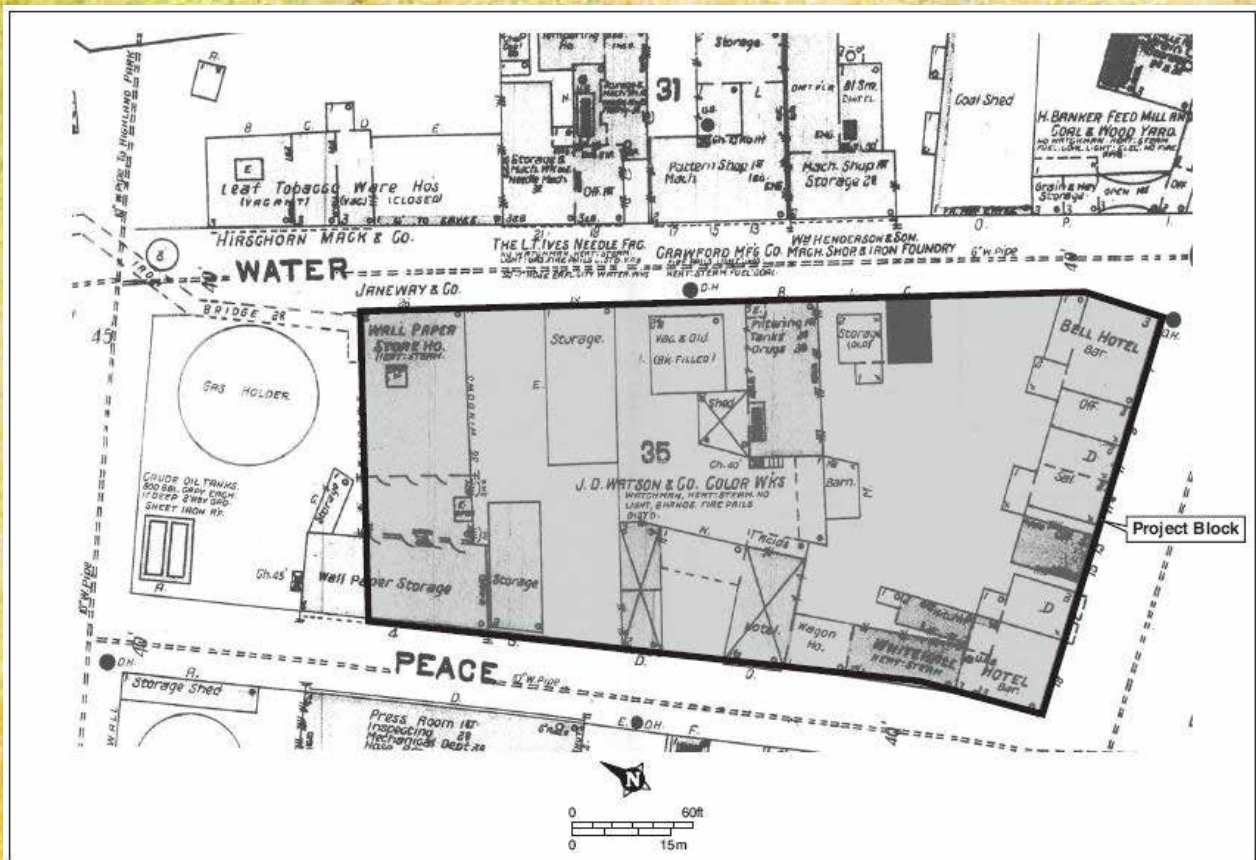


Figure 10. Detail, New Brunswick, N. J. From *Insurance Maps of New Brunswick, New Jersey*, Plate 11. Sanborn Map Company, 1904. Vol. 1, pg. 43.

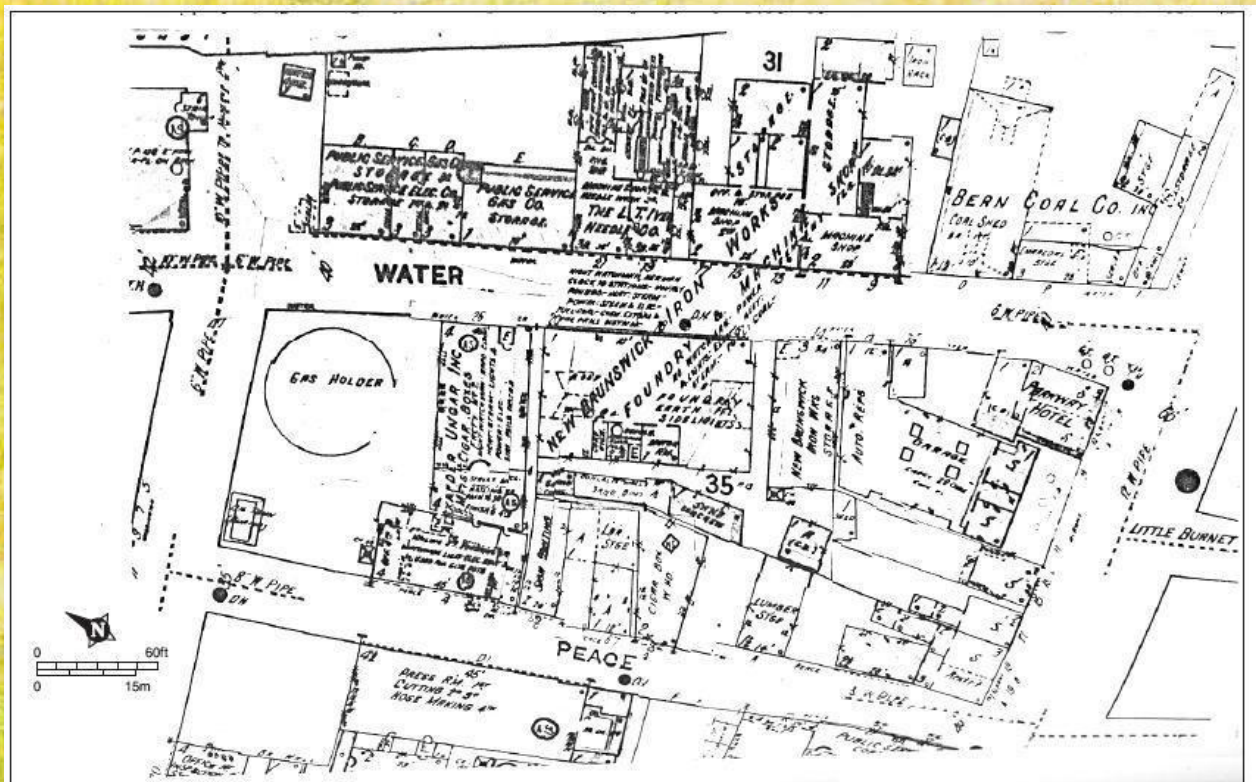
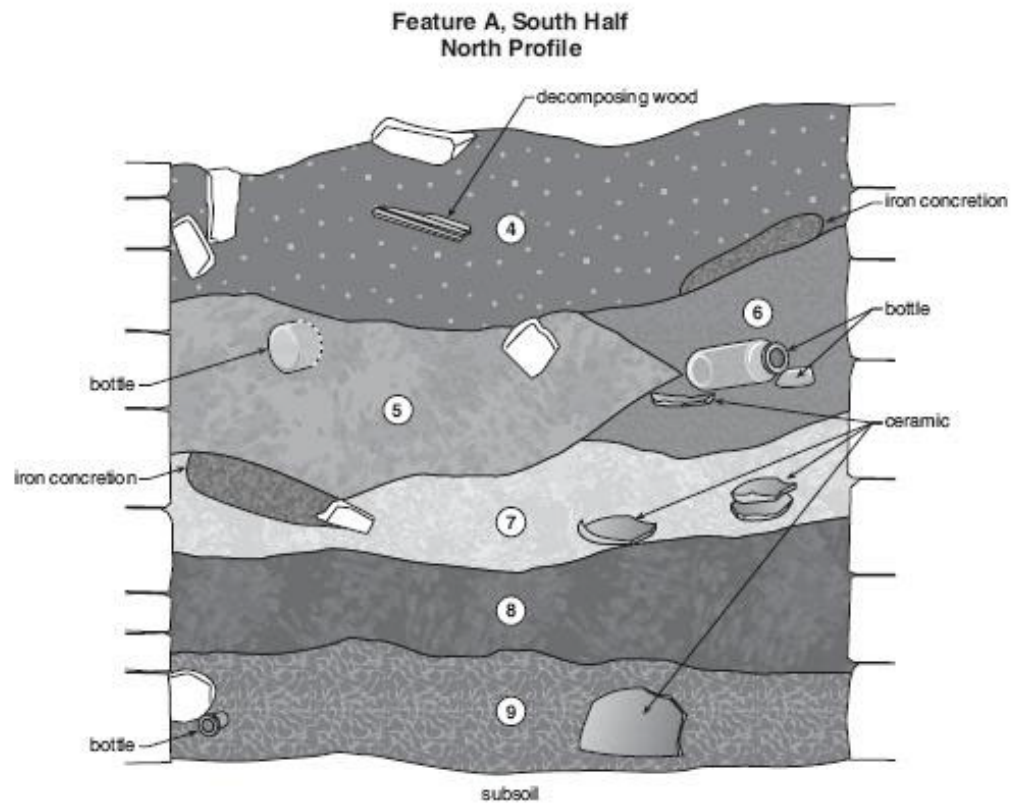


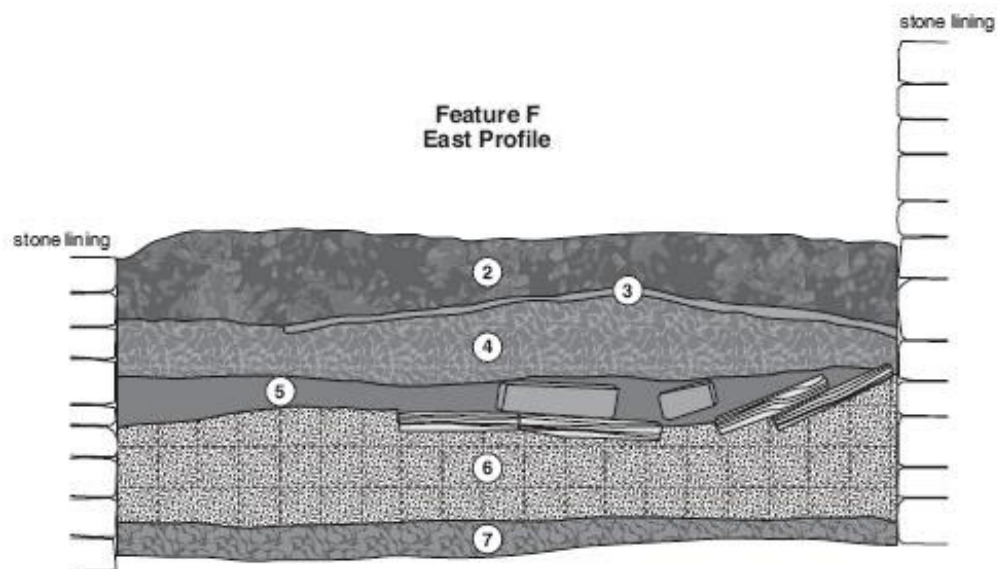
Figure 12. Detail, New Brunswick, N.J. From *Insurance Maps of New Brunswick, New Jersey, and Borough of Highland Park*, Plate 13. Sanborn Map Company, 1927. Vol. 1, pg. 46.



- 4 7.5YR 3/4 dark brown silt loam with pebbles
- 5 2.5Y 3/2 very dark grayish brown sandy silt with organics
- 6 10YR 3/3 dark brown mottled with 10YR 3/2 very dark brown gritty sandy silt with decomposing organics (clinkers)
- 7 2.5Y 3/3 dark olive brown sandy silt with organics (nightsoil)
- 8 2.5Y 3/2 very dark grayish brown silty sand with abundant organics
- 9 5Y 3/2 dark olive gray nightsoil

 Rock

Figure 13. Feature A, south half, north profile. Vol. 1, pg. 50.



- 2 10YR 3/1 very dark gray coal ash and slag with 20% loam
- 3 5YR 4/3 reddish brown packed clay loam mottled with 25% 10YR 3/1 very dark gray clay loam with gravel
- 4 2.5Y 3/1 very dark gray loam mottled with 5YR 3/4 dark reddish brown clay loam in south half (nightsoil)
- 5 5YR 3/4 dark reddish brown clay loam (redeposited subsoil) with gravel and shale fragments
- 6 10YR 2/1 black silt loam with patches of loamy sand (nightsoil)
- 7 10YR 3/1 very dark gray to 10YR 3/2 very dark grayish brown very channery silt loam with pockets of 10YR 2/1 black loamy sand



Brick



Wood

Figure 15. Feature F, east profile. Vol. 1, pg. 100.

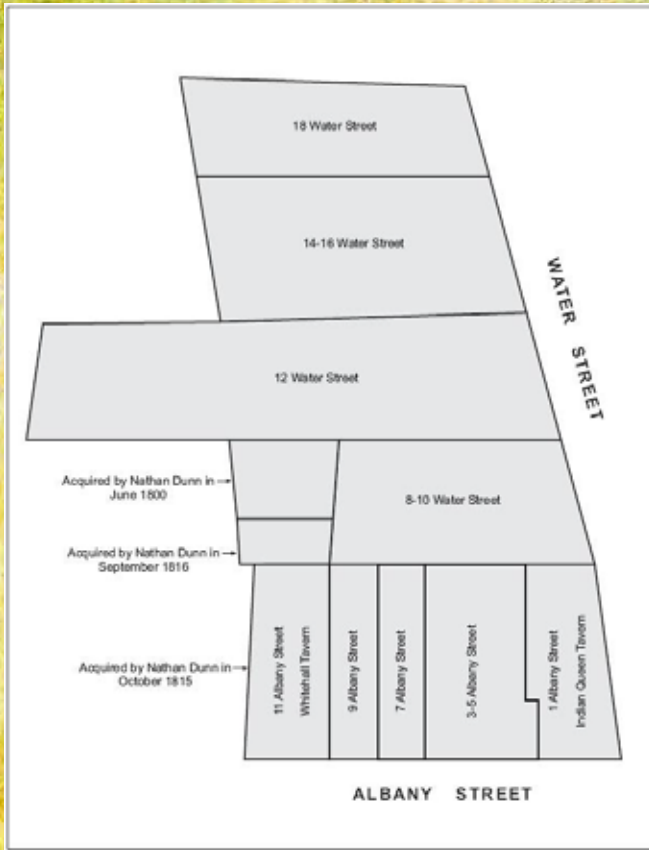


Figure 16. Configuration of lots within the project area between 1806 and 1816. Vol. 1, pg. 116.

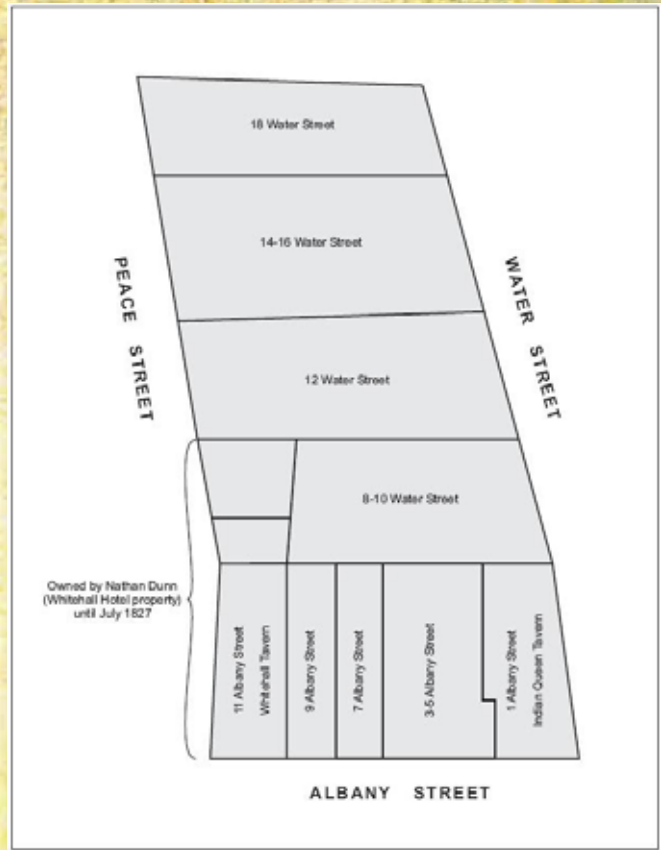


Figure 17. Configuration of lots within the project area between 1816 and 1827. Vol. 1, pg. 150.

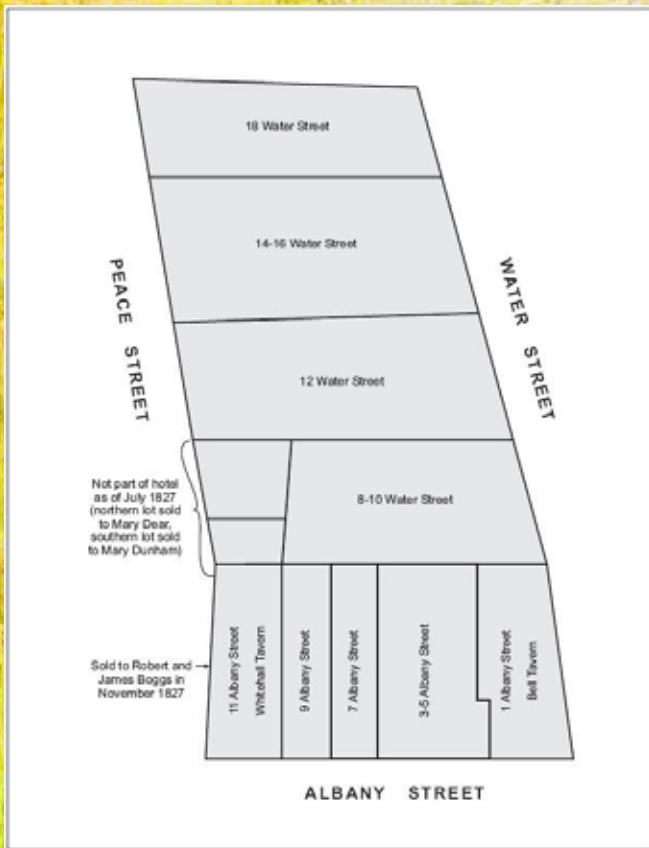


Figure 28. Configuration of lots within the project area between 1827 and 1829. Vol. 1, pg. 229.

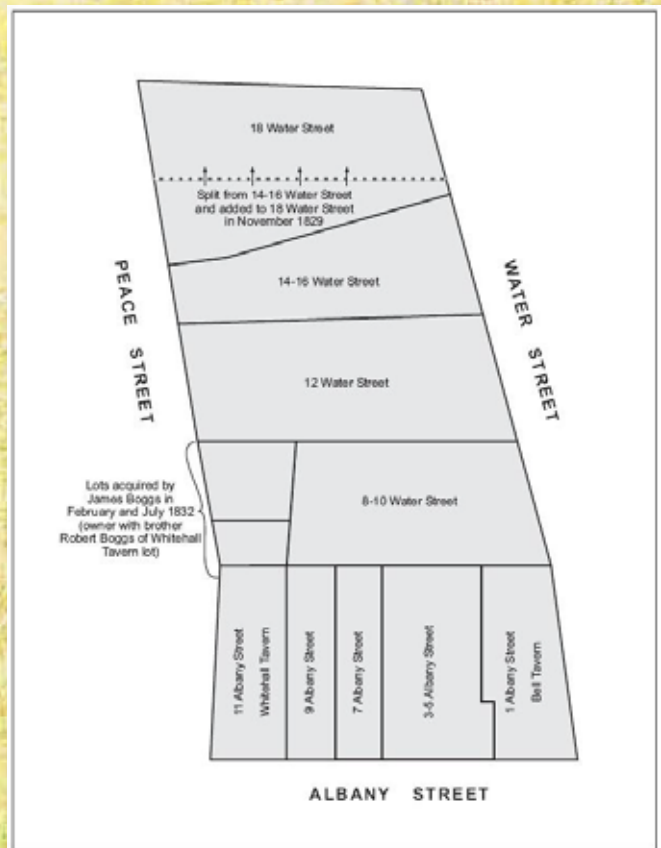


Figure 29. Configuration of lots within the project area between 1829 and 1832. Vol. 1, pg. 230.

CONFIGURATION OF LOTS WITHIN THE PROJECT AREA FROM 1806-1832

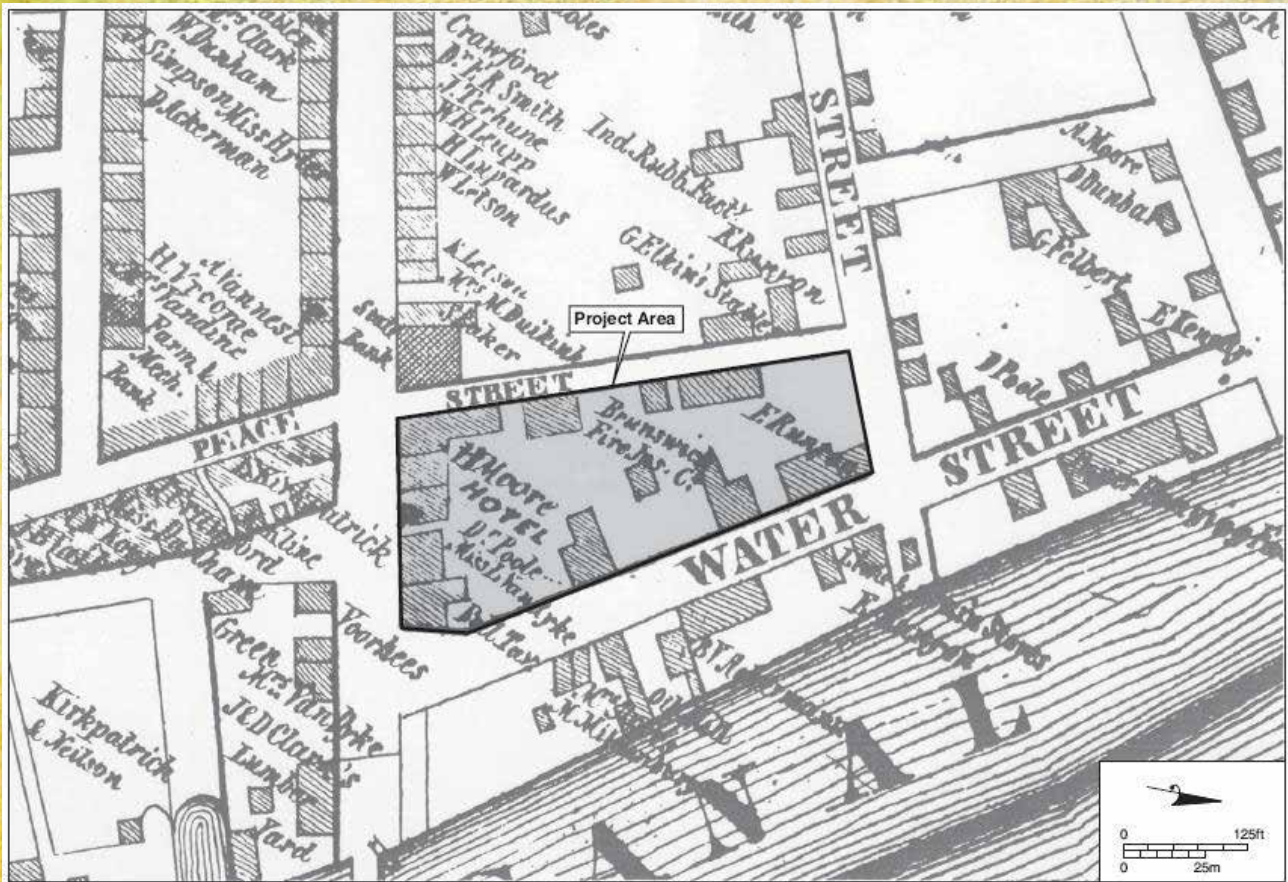


Figure 18. Detail, *Atlas of Middlesex County* (Otley and Keily 1850), showing project area. Vol. 1, pg. 153.

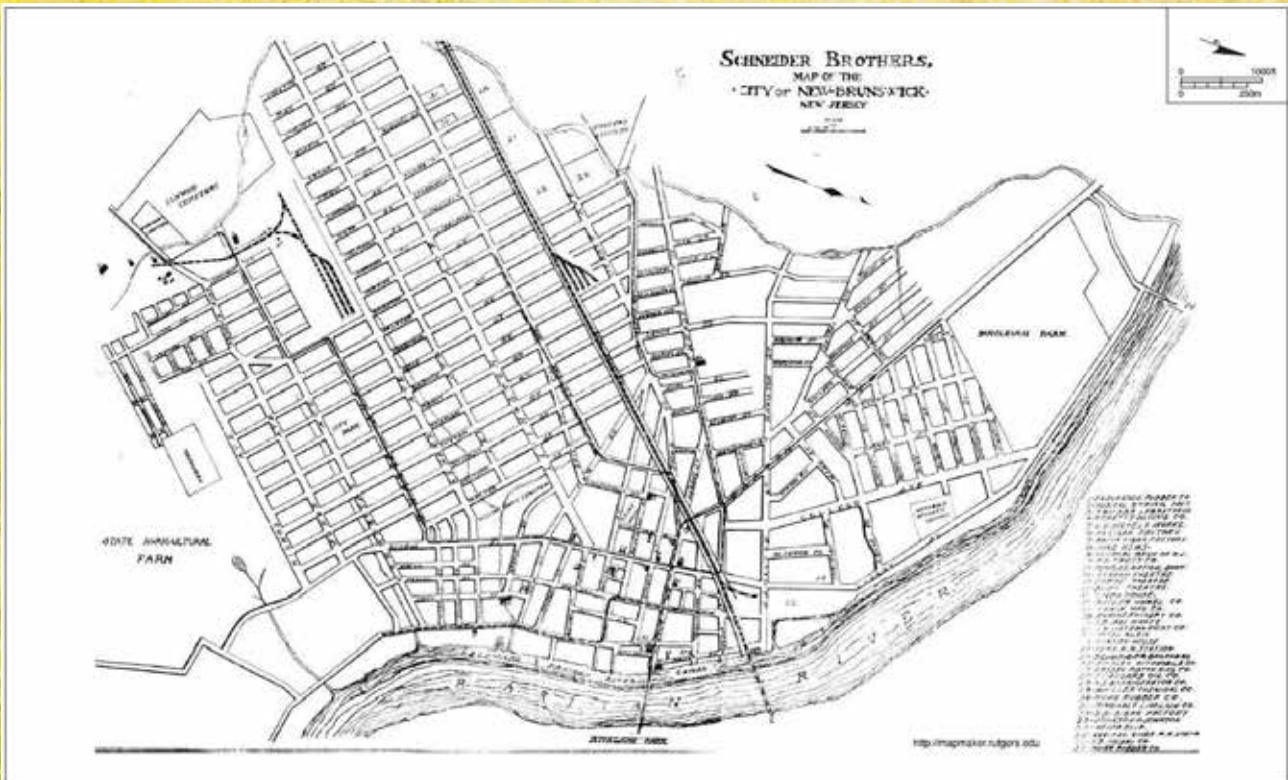


Figure 24. Detail, *Map of the City of New Brunswick, New Jersey*. Schneider Brothers, 1917. Vol. 1, pg. 163.

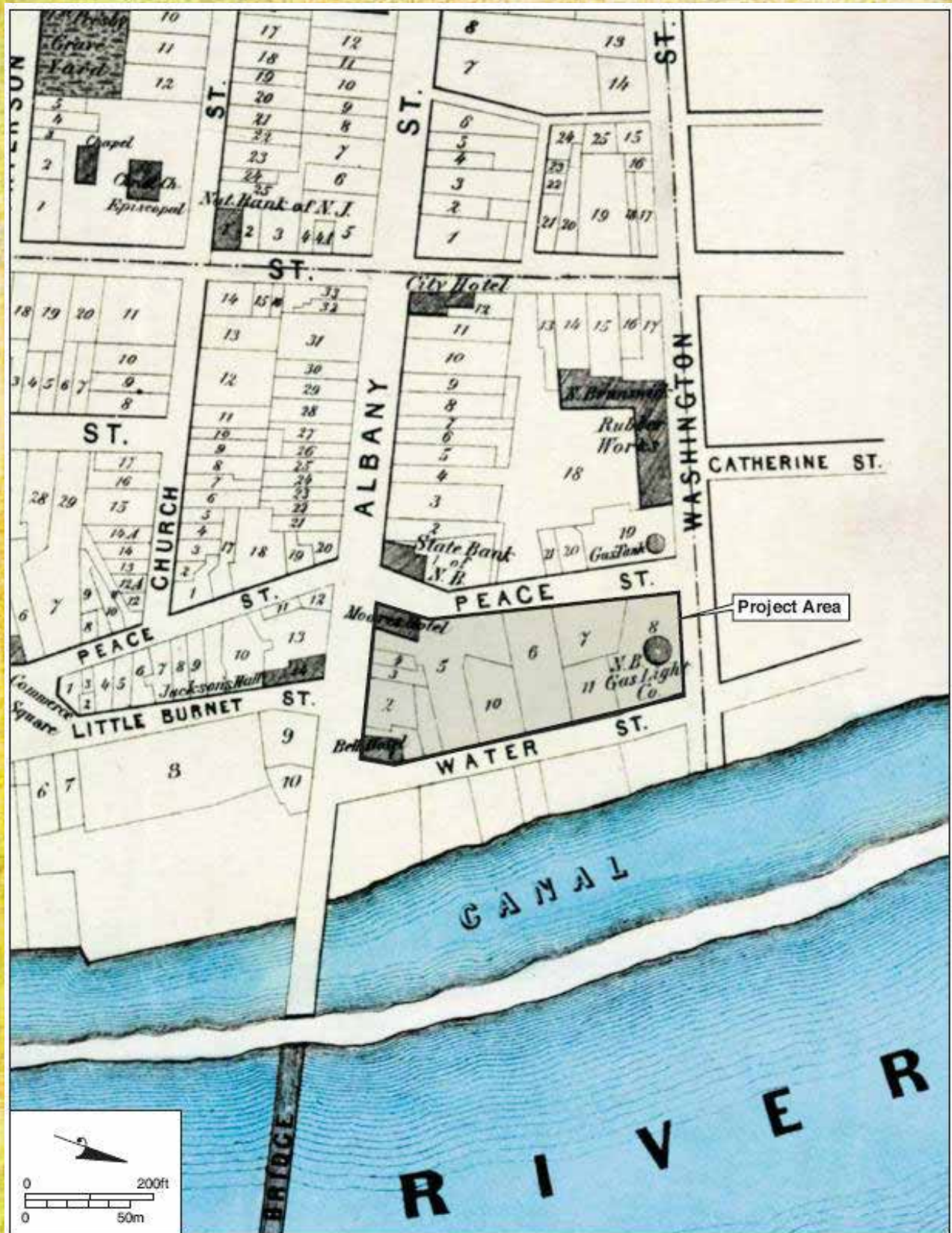
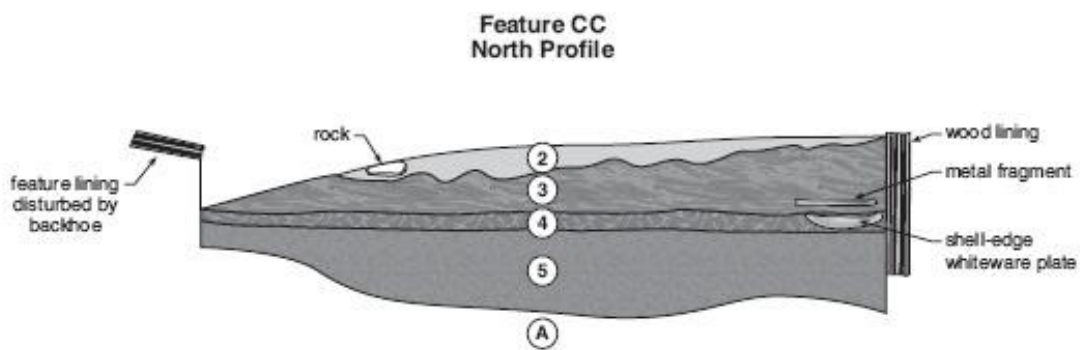


Figure 25. Detail, Everts and Stewart Map of New Brunswick City: Third & Fourth Wards. From *Combination Atlas Map of Middlesex County, New Jersey, 1876*. Vol. 1, pg. 206.



- 2 10YR 4/4 dark yellowish brown silty clay loam
- 3 10YR 3/2 very dark grayish brown loam (nightsoil) with gravel
- 4 10YR 3/1 very dark gray loam (nightsoil) mottled with 20% 5YR 4/6 yellowish red clay loam with decomposed shale
- 5 7.5YR 4/2 brown clay loam mottled with 40% 5YR 4/6 yellowish red clay loam subsoil fill
- A 5YR 4/6 yellowish red clay loam subsoil with decomposed shale

Figure 27. Feature CC, north profile. Vol. 1, pg. 220.

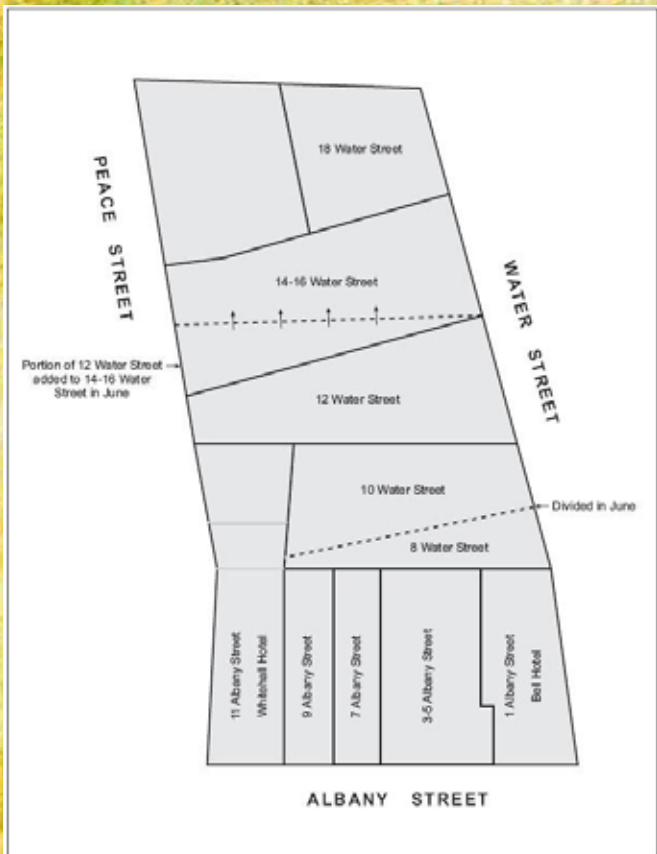


Figure 19. Configuration of lots within the project area in mid-1870. Vol. 1, pg. 156.

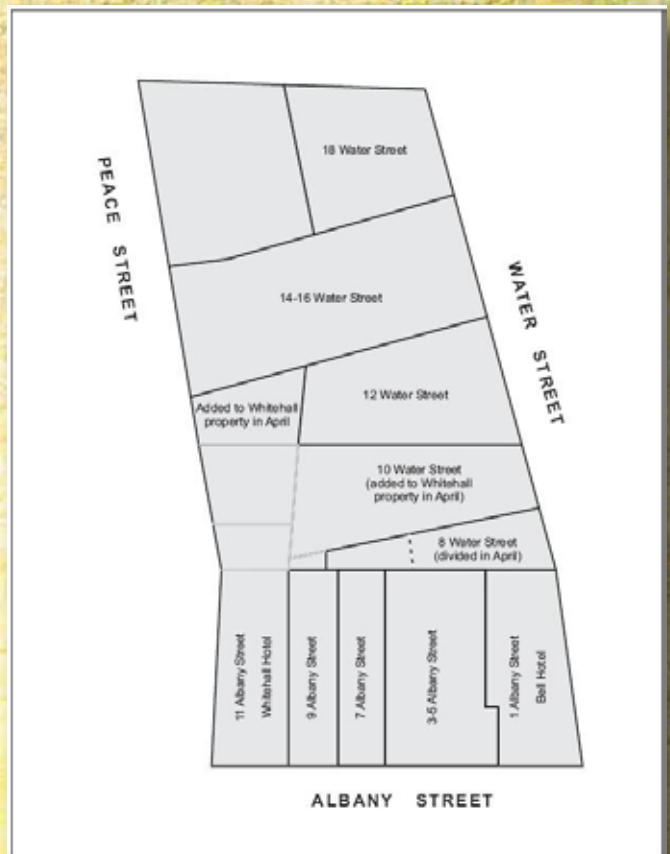


Figure 21. Configuration of lots within the project area, 1871. Vol. 1, pg. 158.

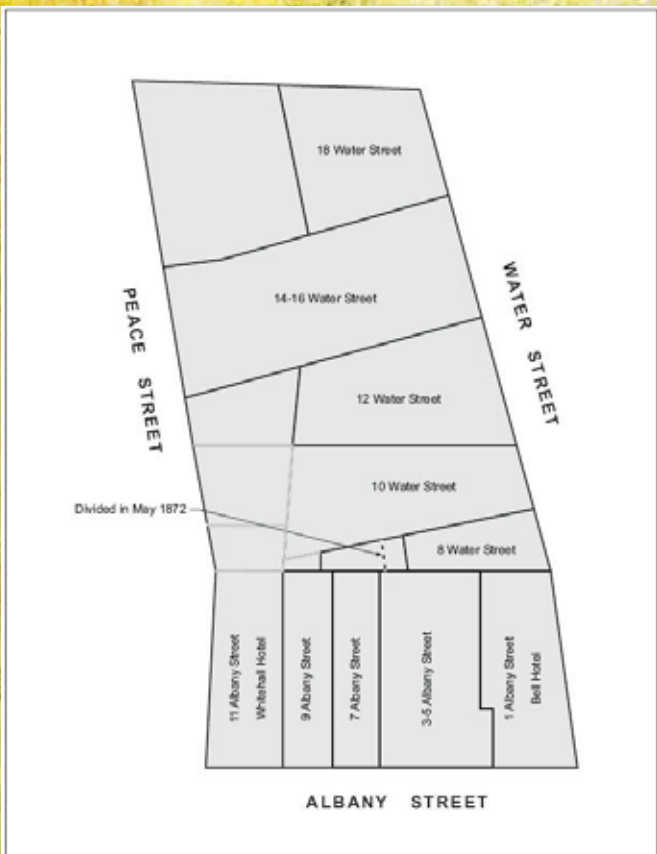


Figure 22. Configuration of lots within the project area between 1871 and 1880. Vol. 1, pg. 159.

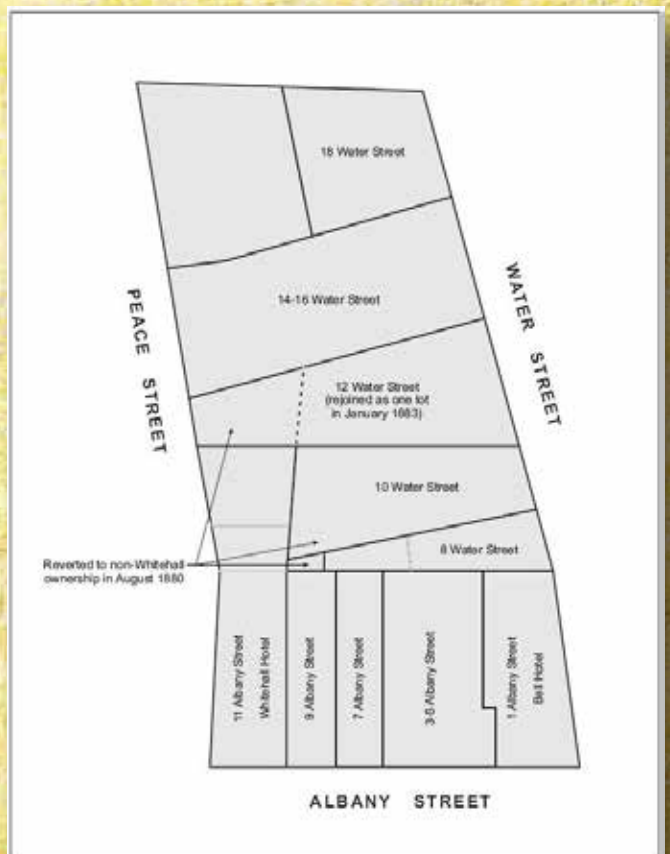


Figure 23. Configuration of lots within the project area between 1880 and 1884. Vol. 1, pg. 161.

CONFIGURATION OF LOTS WITHIN THE PROJECT AREA FROM 1870-1884