



Plate 1. Overhead photograph of Route 18/27 Interchange site from the roof of Johnson and Johnson International Headquarters. Photo by Shane Whilden, 2003. Vol. 1, pg. 25.



Plate 3. Feature A, north profile, showing series of artifact-bearing fill deposits in profile. Note planks at base of feature. View north. Vol. 1, pg. 51.



Plate 4. Blue-edged pearlware twiffler (V.288, 1809-1831) with Lafayette portrait found at the Indian Queen/Bell Tavern privy (Feature A, AS I). Vol. 1, pg. 55.



Plate 5. Sample of platters from the Indian Queen/Bell Tavern (Feature A, AS I), left to right, blue-edged pearlware V.280, plain white granite (rear) V.204, and at the right, one of a matched pair – whiteware platter with blue printed “Chevy Chase” scene by Enoch Wood & Sons made between 1818-1846. Vol. 1, pg. 55.

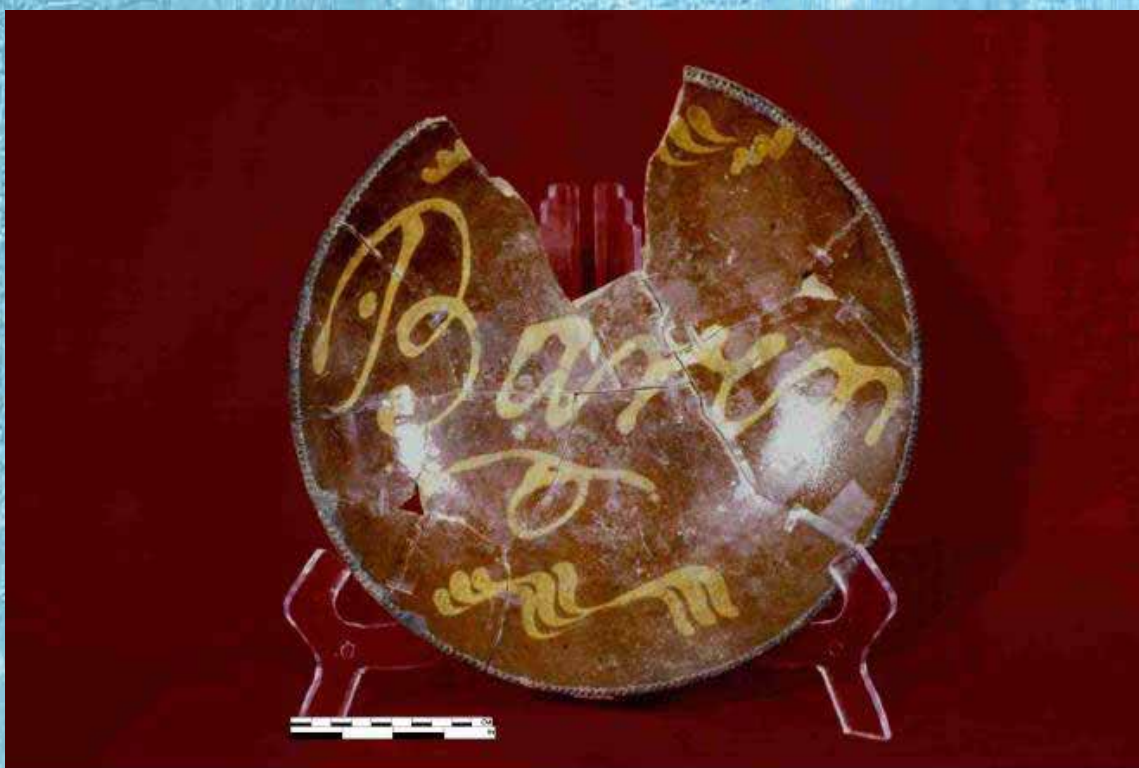


Plate 6. Locally-made red earthenware pie pan (V.12) with slip-decorated script “Barn or Baren” from Indian Queen/Bell Tavern (Feature A, AS I). Vol. 1, pg. 59.

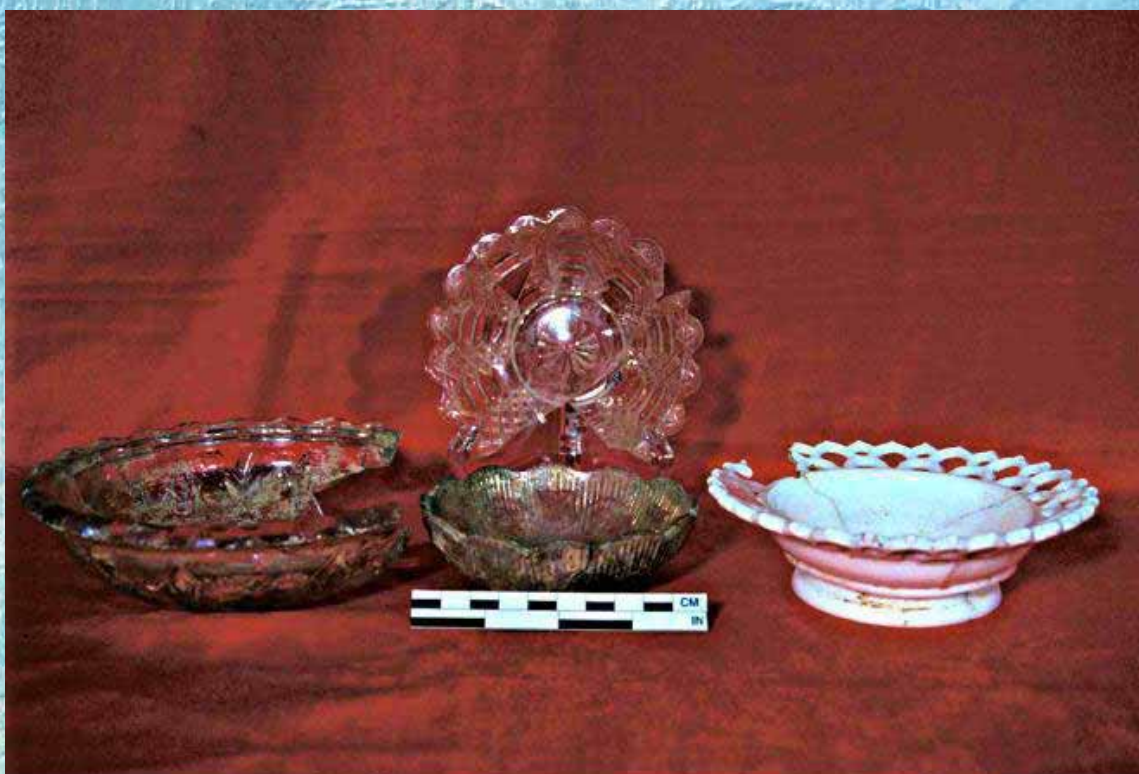


Plate 7. Glass snack dishes discarded in the Bell Tavern privy that may have a brothel association (Feature A, AS II, V.392-3, 395-6). Vol. 1, pg. 62.



Plate 9. White granite toiletries used by the proprietors and boarders of the Bell Tavern in the third quarter of the nineteenth century. Left to right, toothbrush holder V.476, chamber pot (behind) V.443, shaving mug V.474, washbasin V.469, ewer V.471 (behind), and oval box lid V.479 (Feature A, AS II). Vol. 1, pg. 64.



Plate 10. Bottles containing hair products were found in the two later deposits, c. 1870 and 1896, of the Bell Tavern privy (Feature A, AS II). Vol. 1, pg. 68.



Plate 12. Pipes from Feature A, AS III reflect Irish sympathies and perhaps the literary tastes, Mark Twain, of the proprietor and residents of the Bell Tavern. Vol. 1, pg. 70.



Plate 13. Barware from the Bell Tavern, assortment of tumblers, pitchers, and liquor bottles (Feature A, AS II). Vol. 1, pg. 73.



Plate 14. Federal-era artifacts from a trash pit in the rear yard at 9 Albany Street including a nearly whole redware milk pan, fragments of a China blue teapot and plate, tobacco pipes, a c. 1750 English coin, and a Revolutionary War cannonball (Feature C1). Vol. 1, pg. 92.



Plate 16. One of three creamware sugar castors found in a trash pit at 9 Albany Street that may have belonged to the Van Dyke family (Feature C2). Vol. 1, pg. 93.



Plate 22. Pieces from a Canton Chinese Export porcelain dinner service that may have been passed down through the Van Dyke family and discarded in 1882 following the death of the last descendant, Rush Van Dyke, to live in the house (Feature F, AS II). Vol. 1, pg. 108.



Plate 15. Several alcohol bottles and wine glass (Feature C2), and an engraved flip glass (Feature C3) that were discarded in trash pits behind 9 Albany Street. Vol. 1, pg. 93.



Plate 21. High quality lead glass decanter that may have belonged to James Van Dyke (Feature F, AS II). Vol. 1, pg. 106.





Plate 25. Stoneware crocks made by Richards 1770-1780 (top) and Morgan (bottom); all from Feature I, AS II. Vol. 1, pg. 129.



Plate 26. Stoneware crock with notched watchspring spiral decoration characteristic of the New Jersey pottery of Kempel 1745-1800 (Feature I, AS II). Vol. 1, pg. 129.



Plate 29. Brass letter "A" possibly from "Miller's Tavern at the sign of Admiral Verson" mentioned by Dr. Alexander Hamilton in his 1744 diary entry (Feature I) and an incised stone fragment that may have been used for fortune telling by a free African American woman called Aunt Eunice who lived at 7 Albany Street in the 1830s (Feature I-1). Vol. 1, pg. 133.

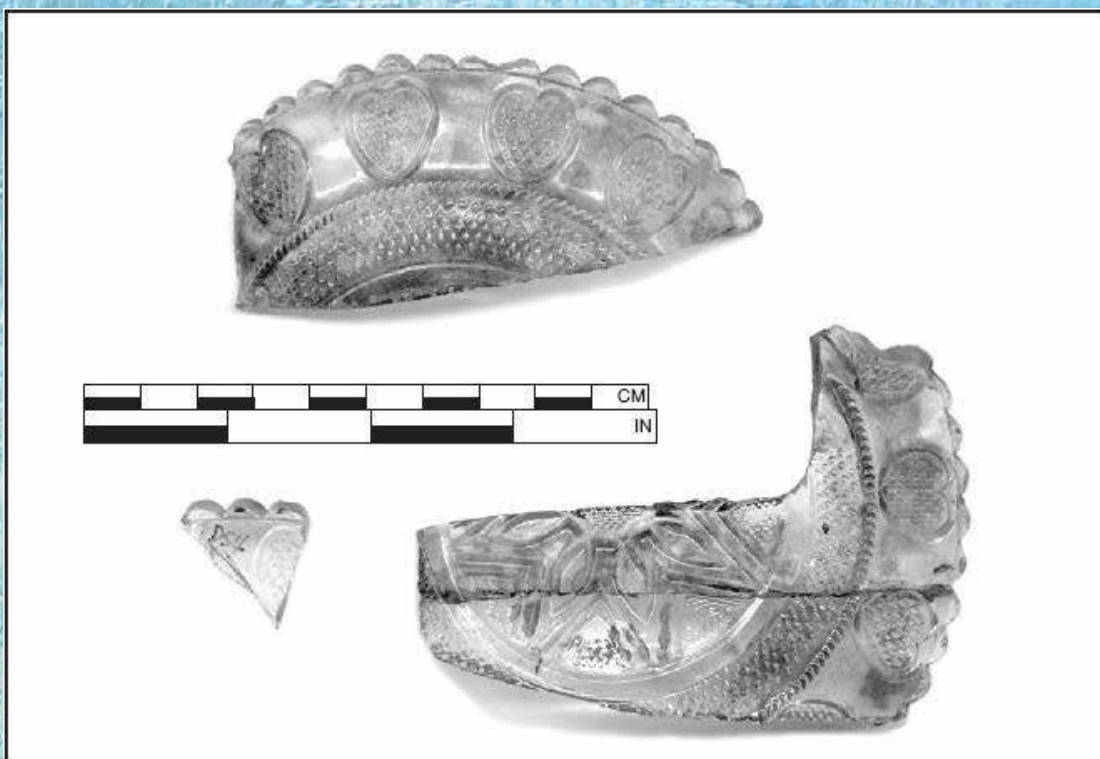


Plate 30. Snack/candy dish most likely made by the Sandwich Glass Works, MA between 1835-1855 (Feature D, AS I). Vol. 1, pg. 164.



Plate 35. Assortment of alcohol bottles from 10 Water Street (Feature Q, AS I and II). Many originate from Newark, Lambertville, and Trenton, New Jersey as well as New York. Vol. 1, pg. 183.



Plate 36. Many tumblers were recovered from Feature Q (AS I and II) at 10 Water Street. Vol. 1, pg. 186.



Plate 39a. Redware inkwell or match holder from 10 Water Street (Feature Q, AS II: Vessel #30). Note scratches on rim showing use wear. Vol. 1, pg. 191.

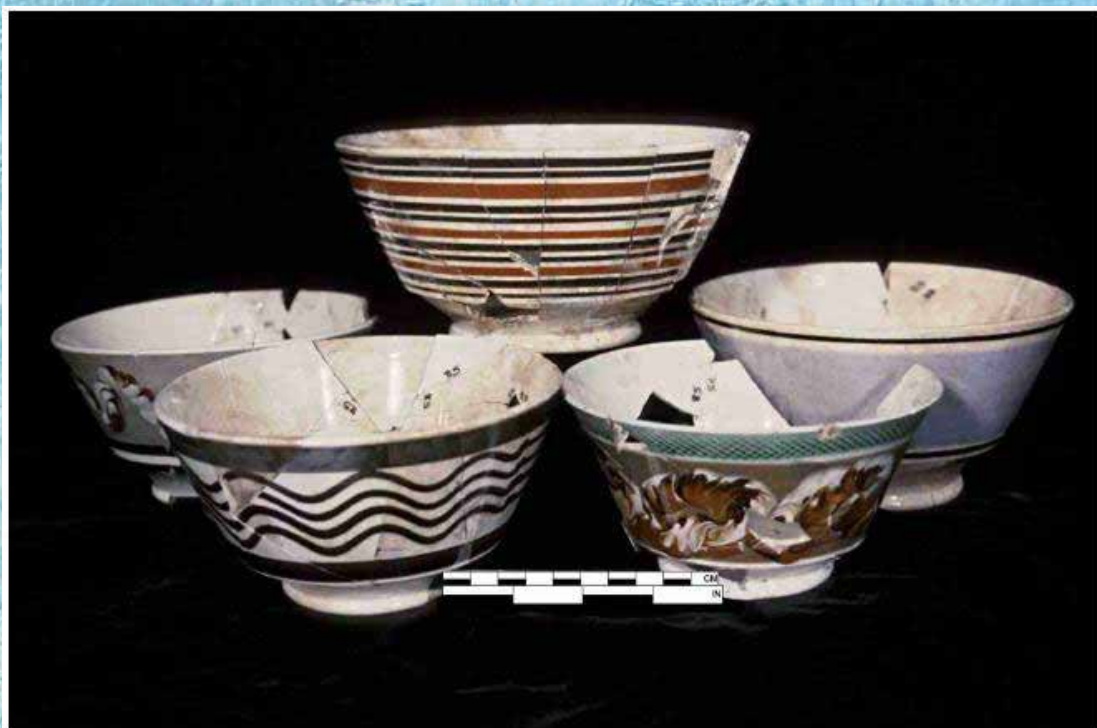


Plate 40. Colorful dipped bowls from the Ackerman kitchen that were popular in America during the nineteenth century (Feature Q, AS I and II). Vol. 1, pg. 195.



Plate 41. Molded pipe bowl c. 1840 in the shape of a turbaned man inscribed "United States of America" around the bowl rim (Feature Q, AS II). Vol. 1, pg. 195.



Plate 47. Hand-carved wooden toy boat found in the fill of a large brick shaft (Feature X) at the rear of 12 Water Street. Vol. 1, pg. 221.



Plate 43. Excavation in progress of brick shaft at 12 Water Street (Feature U, view north). Vol. 1, pg. 211.

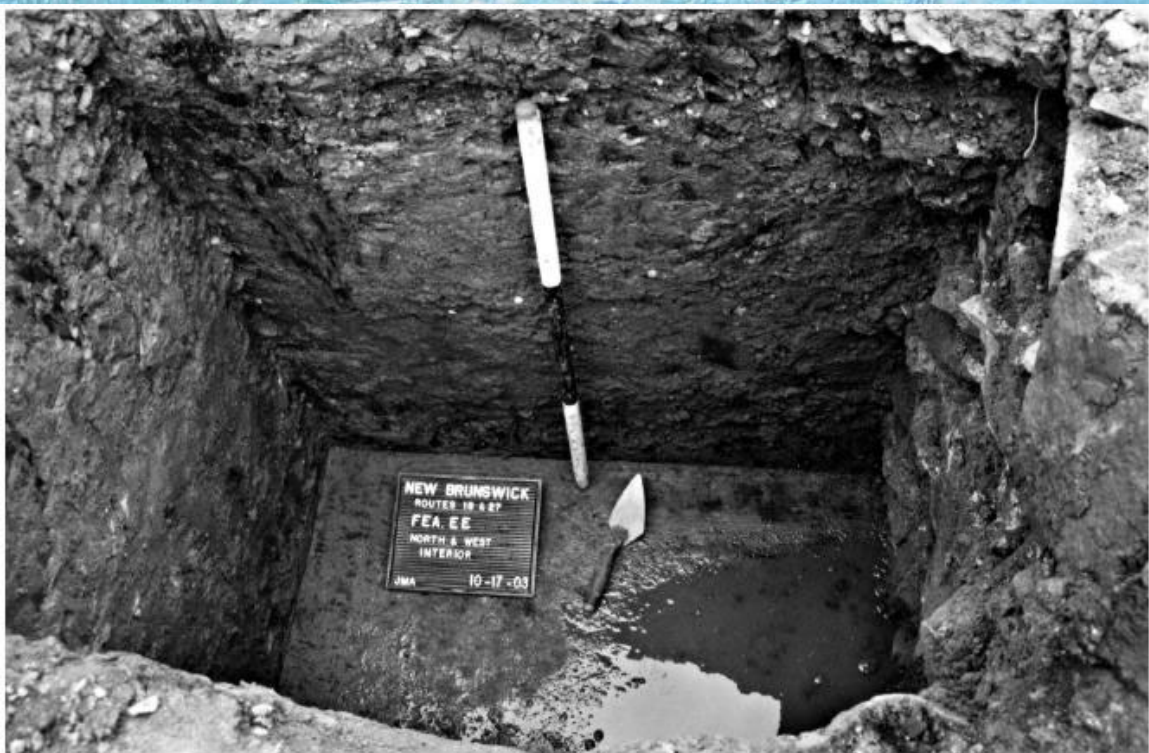


Plate 49. Possible remnant of an earlier eighteenth-century structure (Feature EE) at 12 Water Street, view north-northeast. Vol. 1, pg. 224.

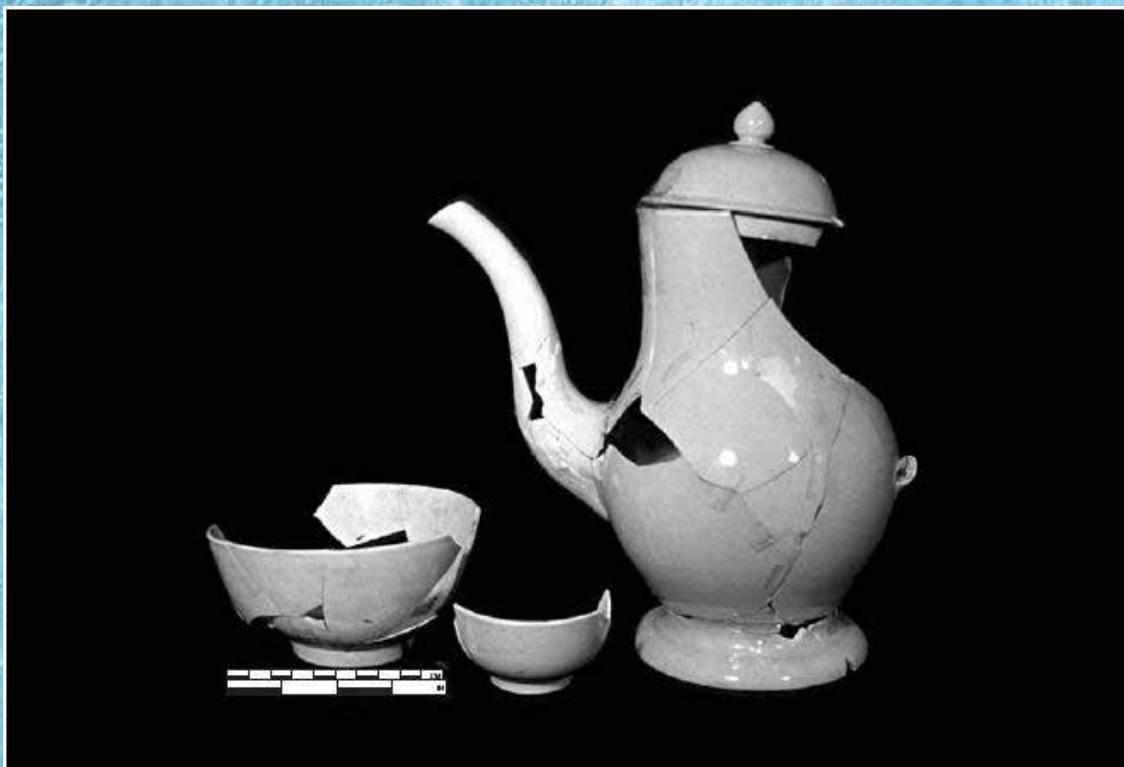


Plate 53. Pieces from a plain creamware tea/coffee set (Set 3) that may have been used by the Taylor family for everyday teas (Feature DD, AS II). Vol. 1, pg. 242.

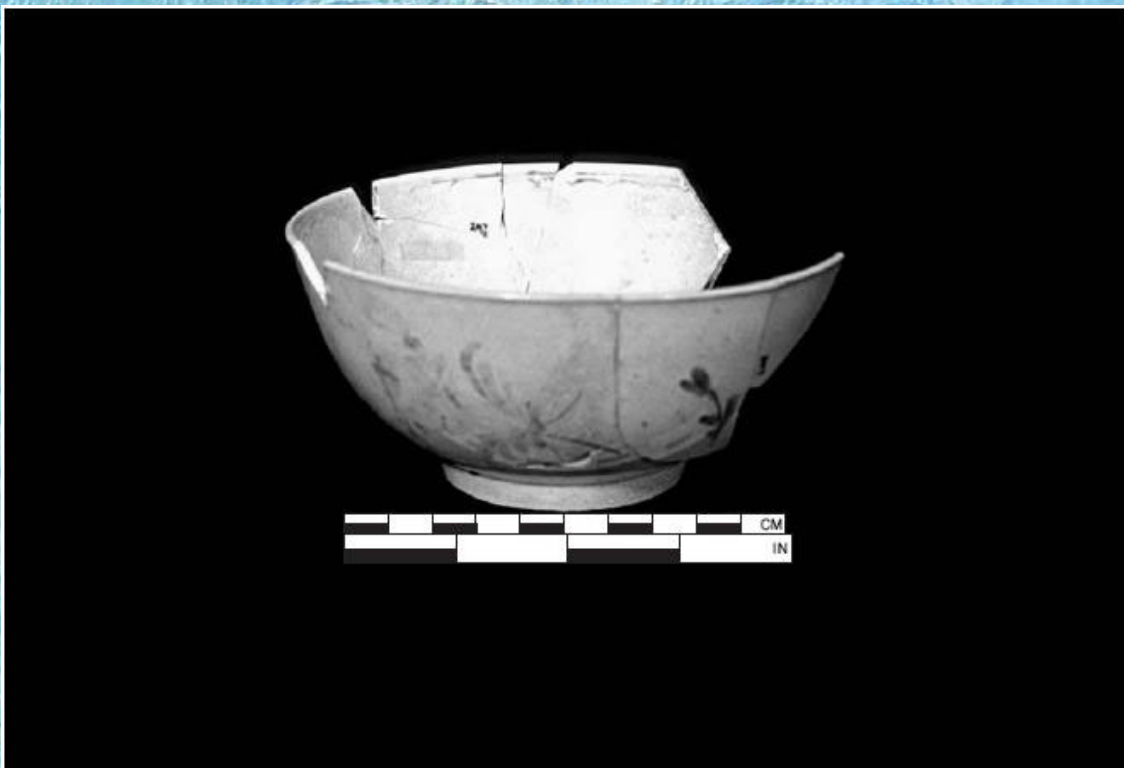


Plate 54. Fancy creamware slop bowl with red overglaze painting, in poor condition (Feature DD, AS II). Vol. 1, pg. 243.

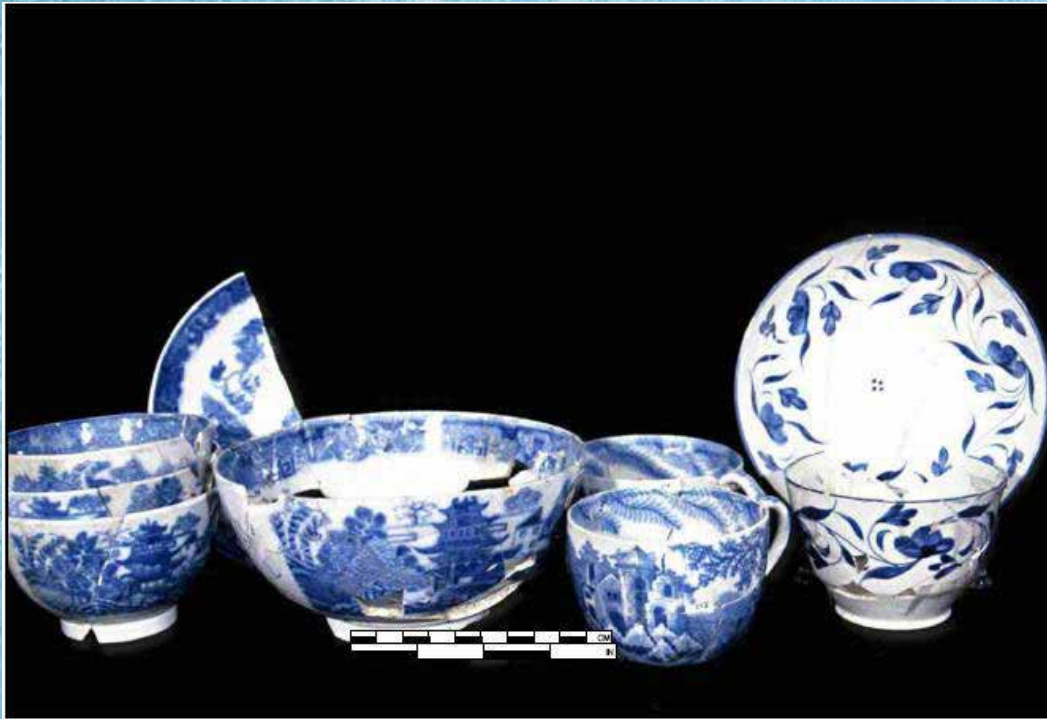


Plate 61. Fashionable teawares belonging to merchant Josiah Stout (Feature Y): blue printed Willow teaset (Set 2) to the left, a pair of matching handled cups center right, and blue painted cup and saucer from Set 1 on the right. Vol. 1, pg. 260.

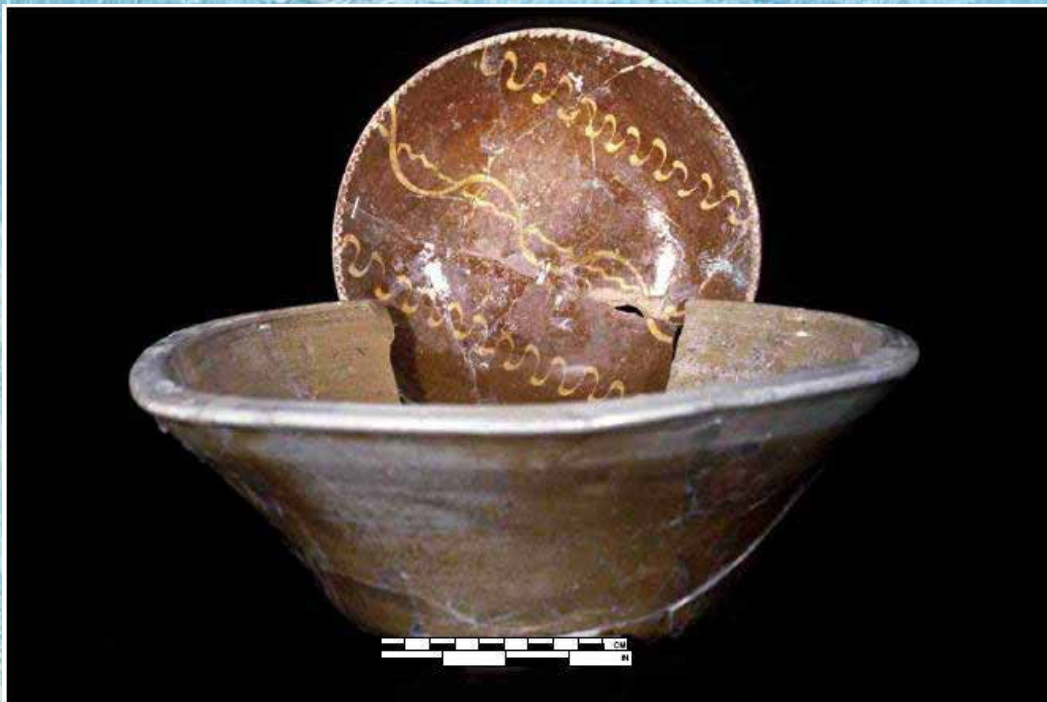


Plate 62. Slip-decorated redware pie pan and stoneware milk pan used by the Stout family (Feature Y). Vol. 1, pg. 263.





Plate 66. The Hiram Market. From The Alexander Library archives. Vol. 1, pg. 270.



Plate 68. The First Reformed Dutch Church. From the Alexander Library Archives. Vol. 1, pg. 274.

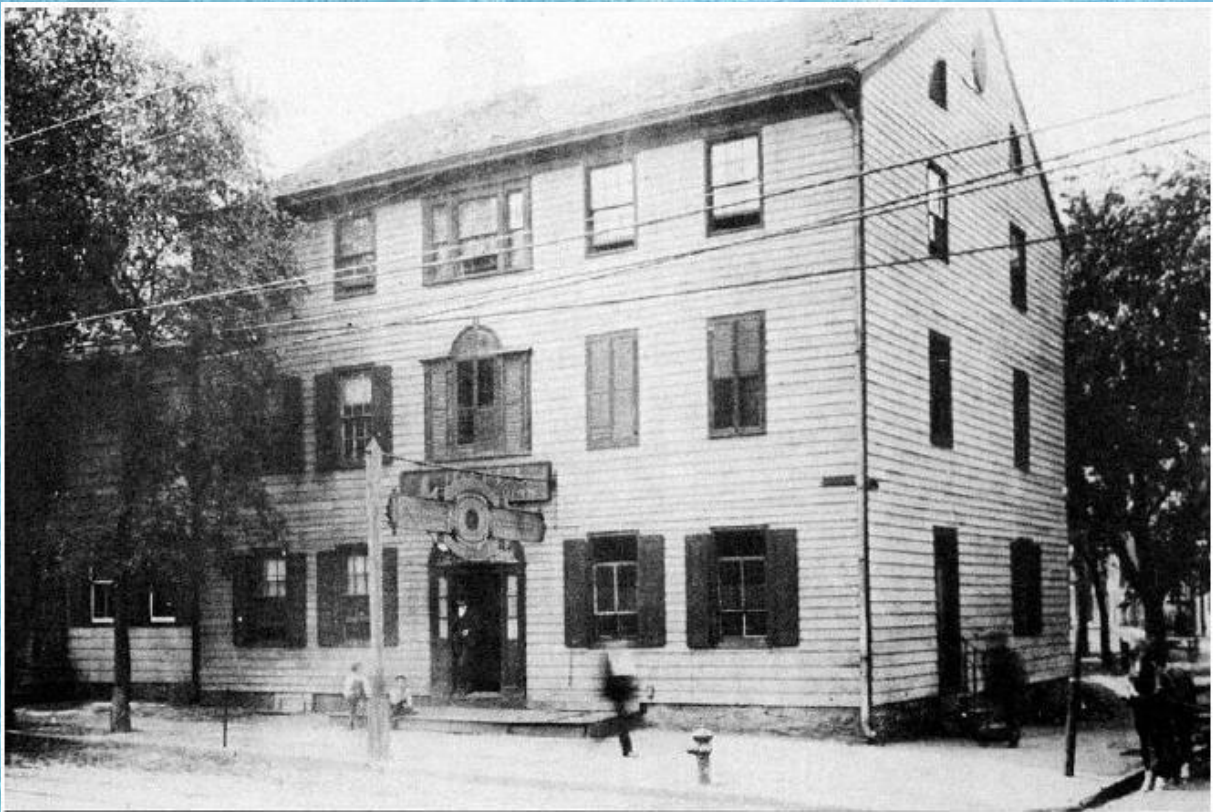


Plate 71. The Bell Hotel. Vol. 1, pg. 278.



Plate 74. Industrialized Water Street. From Regan 1996. Vol. 1, pg. 289.



B4. Cleanup of Feature B (12 Water Street) during initial exposure, view north-northwest. Vol. 2, pg. 78.



B7. Dense artifact assemblage within Feature E, with south edge of Feature D at left, view northeast. Trash pit. Vol. 2, pg. 81.



B8. Feature F opening plan, view south. Privy located at the rear of the Miller Tavern/Van Dyke House lot at No. 3-5 (9-11) Albany Street. Vol. 2, pg. 81.



B19. Excavation of Feature Q Stratum 6, northwest quadrant, view south-southwest. Privy. 14 Water Street. Vol. 2, pg. 89.