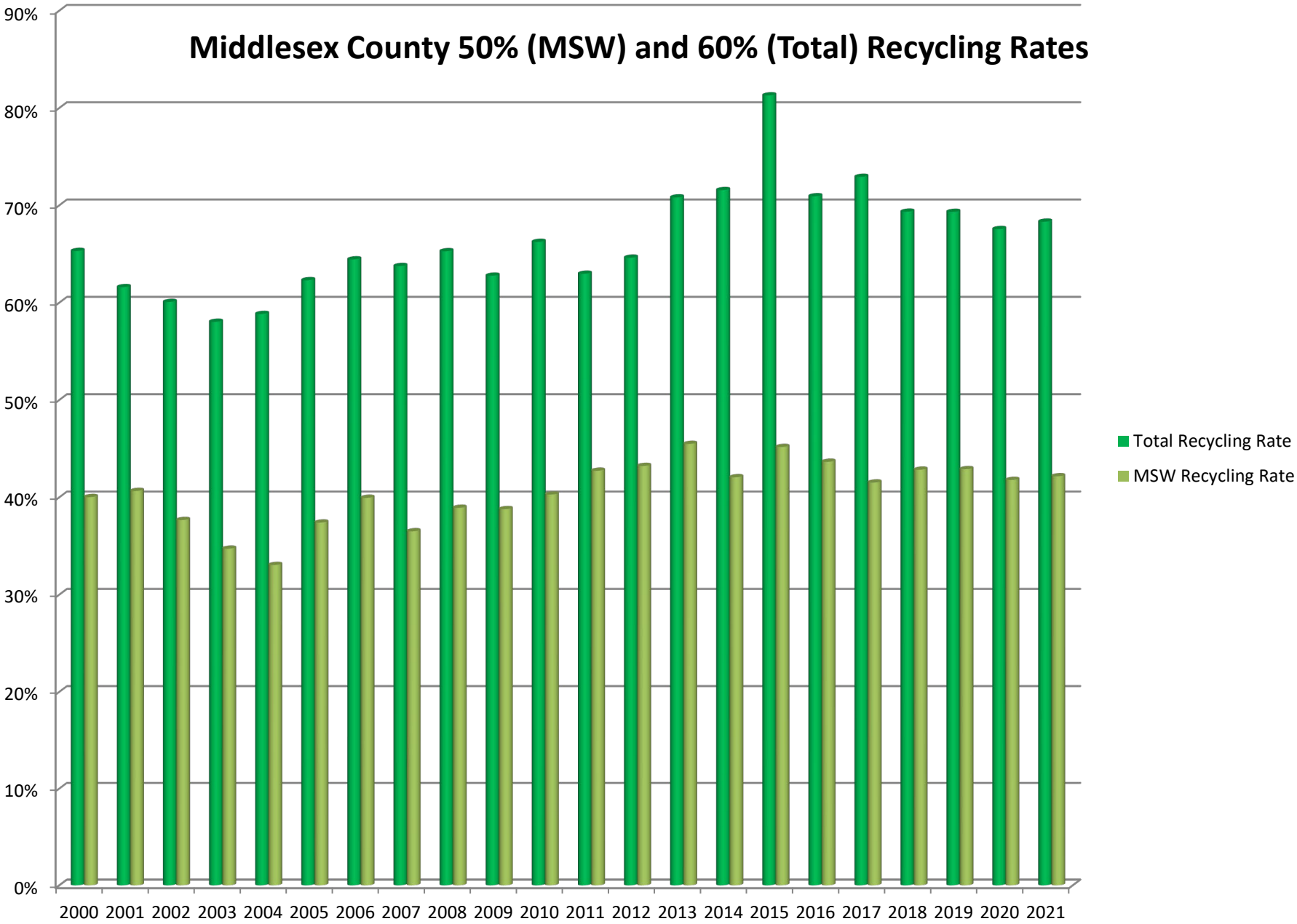
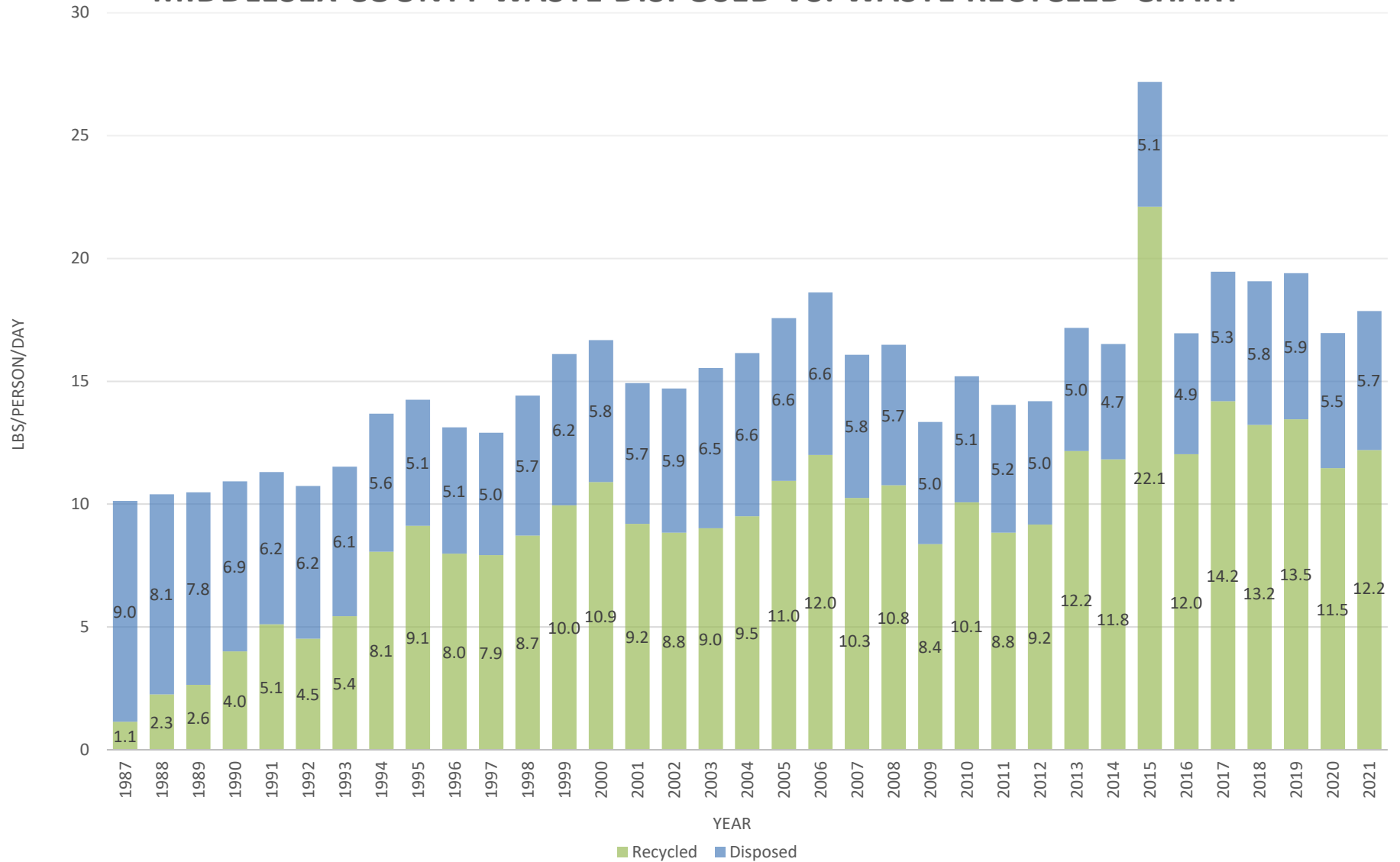


Middlesex County 50% (MSW) and 60% (Total) Recycling Rates



MIDDLESEX COUNTY WASTE DISPOSED VS. WASTE RECYCLED CHART



MIDDLESEX COUNTY WASTE DISPOSED VS. RECYCLED

Year	Total Disposed	MSW Disposed	Total Recycled	MSW Recycled	Total Generated	Total % Recycled	MSW % Recycled	Pop.	Lbs. per Person/Day	Lbs. per Person/Day Recycled	Lbs. per Person/Day Disposed
1983	2,220,000										
1984	2,000,000										
1985	2,440,000										
1986	2,630,000										
1987	1,060,000		134,605		1,194,605	11.27%		645,709	10.1	1.1	9.0
1988	970,000		269,397		1,239,397	21.74%		653,218	10.4	2.3	8.1
1989	945,042		318,100		1,263,142	25.18%		660,490	10.5	2.6	7.8
1990	849,119		490,796		1,339,915	36.63%		671,811	10.9	4.0	6.9
1991	766,163		631,035		1,397,198	45.16%		676,904	11.3	5.1	6.2
1992	773,395		563,940		1,337,335	42.17%		682,661	10.7	4.5	6.2
1993	763,135		682,597		1,445,732	47.21%		687,299	11.5	5.4	6.1
1994	711,080		1,019,740		1,730,820	58.92%		692,900	13.7	8.1	5.6
1995	653,229	395,099	1,162,904	335,025	1,816,133	64.03%	45.89%	698,494	14.2	9.1	5.1
1996	660,058	410,558	1,022,986	365,468	1,683,044	60.78%	47.09%	702,485	13.1	8.0	5.1
1997	643,705	405,829	1,024,508	380,329	1,668,213	61.41%	48.38%	708,118	12.9	7.9	5.0
1998	741,216	429,286	1,133,615	374,036	1,874,831	60.46%	46.56%	712,638	14.4	8.7	5.7
1999	806,790	464,660	1,304,672	452,425	2,111,462	61.79%	49.33%	717,949	16.1	10.0	6.2
2000	794,867	506,007	1,497,168	337,861	2,292,035	65.32%	40.04%	752,942	16.7	10.9	5.8
2001	796,136	509,556	1,277,321	349,230	2,073,457	61.60%	40.67%	761,353	14.9	9.2	5.7
2002	823,549	528,674	1,239,504	319,622	2,063,053	60.08%	37.68%	768,578	14.7	8.8	5.9
2003	921,516	593,459	1,274,808	315,847	2,196,324	58.04%	34.73%	774,303	15.5	9.0	6.5
2004	945,374	608,824	1,351,694	300,678	2,297,068	58.84%	33.06%	779,481	16.1	9.5	6.6
2005	948,122	614,338	1,567,684	367,291	2,515,806	62.31%	37.42%	784,437	17.6	11.0	6.6
2006	946,161	614,876	1,715,885	409,186	2,662,046	64.46%	39.96%	783,371	18.6	12.0	6.6
2007	832,363	618,891	1,465,119	356,065	2,297,482	63.77%	36.52%	783,029	16.1	10.3	5.8
2008	824,184	587,891	1,550,614	374,809	2,374,798	65.29%	38.93%	789,102	16.5	10.8	5.7
2009	716,565	550,571	1,208,622	349,006	1,925,187	62.78%	38.80%	790,738	13.3	8.4	5.0
2010	759,467	553,312	1,490,991	373,473	2,250,458	66.25%	40.30%	810813	15.2	10.1	5.1
2011	773,476	549,632	1,315,834	410,262	2,089,310	62.98%	42.74%	815253	14.0	8.8	5.2
2012	750,449	515,039	1,371,129	392,276	2,121,578	64.63%	43.23%	819389	14.2	9.2	5.0
2013	751,759	518,171	1,824,431	432,574	2,576,190	70.82%	45.50%	821811	17.2	12.2	5.0
2014	706,440	518,266	1,778,972	376,411	2,485,412	71.58%	42.07%	824331	16.5	11.8	4.7
2015	765,969	534,183	3,330,716	440,335	4,096,685	81.30%	45.18%	825471	27.2	22.1	5.1
2016	742,364	526,832	1,812,074	408,274	2,554,438	70.94%	43.66%	825298	17.0	12.0	4.9
2017	795,049	555,362	2,142,138	394,482	2,937,187	72.93%	41.53%	826972	19.5	14.2	5.3
2018	880,650	569,273	1,992,860	426,766	2,873,510	69.35%	42.85%	825677	19.1	13.2	5.8
2019	894,983	568,942	2,023,651	427,531	2,918,634	69.34%	42.90%	824394	19.4	13.5	5.9
2020	866,569	569,987	1,805,602	409,298	2,672,171	67.57%	41.80%	863162	17.0	11.5	5.5
2021	890,342	566,072	1,920,942	412,819	2,811,284	68.33%	42.17%	862364	17.9	12.2	5.7

Notes:

In 1993, the NJ DEP began adding in ISRI/AMRA metal figures to the recycling tonnages.

Population data from US Census 3/20/08 (2000 - 2006); 3/19/09 (2007-08); March 2010 (2009); 5/2021 (2010-2019); V2021 (2020); 3/2024 (2021)

MIDDLESEX COUNTY RECYCLING
2021 FINAL REPORT

	Carteret	Cranbury	Dunellen	E Brunswick	Edison	Helmetta	Highland Park	Jamesburg	Metuchen	Middlesex	Milltown	Monroe	New Brunswick	No Brunswick	Old Bridge	Perth Amboy	Piscataway	Plainsboro	Sayreville	South Amboy	South Brunswick	South Plainfield	South River	Spotswood	Woodbridge	Total Of tons	
Corrugated	7675.2	11518.2	256.4	5691.7	27133.5	69.2	688.0	10774.3	1246.0	581.0	1326.1	9443.9	4976.6	6195.6	8989.5	13294.3	6211.4	1469.8	4314.9	205.2	23964.8	8514.1	836.7	382.9	24686.1	180445	
Mixed Office Paper	420.4	2440.6	101.5	1609.1	2652.6	35.4	166.9	22.8	166.4	156.6	141.6	1286.8	2178.0	584.0	2425.0	1315.5	1117.0	711.4	1215.2	155.8	726.9	8069.1	197.0	119.2	3230.7	31246	
Newspaper	229.4	1413.1	75.8	1426.2	1724.1	23.0	431.8	74.1	410.1	118.4	82.6	792.6	920.0	1011.3	1502.2	875.3	502.7	647.8	537.3	94.4	1187.5	500.8	121.0	82.7	1473.5	16258	
Other Paper/Mag/JunkMail	463.5	2007.1	124.8	1993.2	3273.9	41.6	374.5	87.0	373.4	1012.0	152.5	1991.6	1426.3	1057.8	2599.0	1614.7	1219.2	929.3	1010.8	168.5	1133.4	6559.0	222.5	135.4	3372.3	33343	
Glass Containers	180.4	315.0	71.6	1451.3	1481.0	17.2	254.3	27.0	243.0	110.1	68.0	855.4	1330.2	665.9	1400.2	764.5	670.6	477.9	669.7	73.0	744.6	661.4	120.7	100.7	1406.7	14160	
Aluminum Containers	77.7	54.0	20.9	115.8	484.4	6.6	21.7	3.4	23.1	28.2	24.4	179.5	330.4	75.4	450.3	254.4	201.4	128.3	314.3	29.6	51.9	309.7	43.7	25.6	914.4	4169	
Steel Containers	105.3	158.2	39.8	187.1	745.3	6.7	40.8	1.6	34.2	34.3	25.1	196.1	442.7	116.0	712.2	348.7	248.8	655.4	450.1	29.7	583.3	190.6	200.7	26.9	802.8	6382	
Plastic Containers	694.5	201.2	52.2	397.9	1334.4	17.5	66.2	7.1	66.1	84.9	64.1	434.3	720.1	223.3	1127.0	684.3	543.5	867.0	737.8	76.1	158.2	470.4	98.7	63.1	1628.6	10819	
Heavy Iron	60.0	1560.9	0.0	2.6	0.1	0.0	0.0	0.0	0.8	0.0	0.7	119.3	240.2	340.7	100.2	277.9	193.9	78.9	1355.7	1.2	0.0	769.6	23.4	2.0	43418.7	48547	
NonFerrous/Al. Scrap	99.2	101.9	0.2	120.7	30.6	0.0	1.5	51.9	0.4	4.8	0.3	531.0	34.9	13.5	16.7	315.4	373.1	13.5	12.1	0.4	264.4	229.4	0.8	0.0	4417.4	6634	
White Goods & Light Iron	17.0	79.9	0.1	410.5	279.4	0.1	38.7	0.0	61.2	62.3	52.7	79.9	104.1	300.2	147.5	339.1	407.9	28.6	539.9	6.7	103.9	5068.6	38.5	110.9	5894.9	14172	
Anti-freeze	0.0	2.6	0.9	8.5	18.5	0.0	0.0	250.3	0.0	1.8	0.6	5.2	2.1	4.4	6.1	0.8	3.3	0.9	2.2	0.5	23.5	12.4	0.0	0.4	38.0	383	
Batteries (Automobile)	0.0	3.1	0.0	86.3	60.2	0.0	0.0	0.0	3.6	0.0	2.8	48.5	5.1	26.8	67.9	12.1	24.5	1.6	11.8	1.8	24.3	146.6	0.0	2.3	1818.5	2348	
Automobile Scrap	0.0	0.0	0.0	0.0	1.4	0.0	0.0	0.0	0.0	0.0	6.0	714.2	0.0	0.0	0.3	0.0	13.6	0.0	72.0	0.0	24.3	10.3	0.0	0.0	8720.2	9562	
Tires	0.0	18.2	3.2	63.2	1211.2	1.6	5.5	2.8	5.4	5.4	6.5	4247.0	16.6	250.2	425.1	10680.2	305.7	21.5	44.6	39.0	199.3	1713.7	7.2	15.9	2861.0	22150	
Used Motor Oil	12.4	41.7	53.6	189.2	522.8	1.9	0.0	28.4	7.1	55.4	22.8	59.1	7.0	223.8	280.9	176.2	50.0	4.2	103.8	7.9	187.7	363.7	22.2	17.0	783.9	3223	
Brush/Tree Parts	167.6	1888.0	459.3	2976.0	1439.6	45.3	8.6	52.3	168.6	598.6	486.3	3297.8	525.1	1198.6	3358.4	72.8	9498.8	1540.9	677.9	134.1	3982.4	3046.7	2581.9	38.9	9023.2	47267	
Grass Clippings	0.0	0.0	122.2	5511.9	1520.8	0.0	0.0	0.0	733.0	573.0	67.9	940.1	0.0	0.0	200.4	0.0	447.0	238.9	138.2	0.0	0.0	70.4	36.0	46.1	30.6	10677	
Leaves	273.7	1819.9	340.0	8514.6	3206.9	11.5	286.0	228.1	1115.5	349.3	236.6	3040.5	186.2	763.8	748.6	64.4	1465.2	2191.8	366.0	28.7	2405.8	1538.6	370.2	195.3	2189.8	31937	
Stumps	0.0	298.3	0.0	450.4	819.1	0.0	0.0	0.8	5.6	45.0	23.0	22.5	550.8	96.0	57.3	1.6	628.1	28.5	134.0	0.0	54.3	49.9	0.3	12.0	146.4	3424	
Consumer Electronics	0.3	6.2	32.2	59.3	116.8	2.5	3.0	0.0	0.9	0.0	0.0	69.2	79.3	13.7	111.8	111.7	15.3	30.2	19.6	2.7	214.4	179.4	6.9	0.0	120.4	1196	
Concrete / Asphalt	12275.6	25492.5	125.8	104155.3	106860.3	1998.4	10327.5	2681.0	14341.0	6664.2	2010.0	14762.2	27724.9	21451.6	76264.1	67388.0	25741.8	16626.4	312593.5	9890.7	30683.2	41110.1	11850.0	881.7	116103.6	1060003	
Food Waste	424.8	93.0	16.3	817.4	630.0	1.0	64.3	6.8	25.8	17.3	23.8	17.9	81.6	331.6	392.2	784.2	215.0	13.3	64.4	197.3	129.6	80.1	12.5	11.6	2395.2	6847	
Other Material Not Listed	426.4	12.3	18.9	64.6	8.4	11.4	0.8	130.1	104.2	20.7	2.3	267.5	29.8	405.9	573.8	185.2	1258.1	3.1	128283.5	163.0	8.1	379.2	0.4	0.0	629.1	132986	
Other Glass	1.0	0.1	0.0	0.0	0.0	0.0	0.0	0.0	0.0	0.0	0.3	0.0	0.0	0.0	2.8	0.1	0.0	0.0	0.0	0.0	0.0	0.0	0.0	0.0	0.0	8.4	13
Other Plastic	1.0	36.5	0.0	35.0	151.2	0.0	0.0	0.0	0.0	0.0	6.6	5.7	133.3	260.6	137.2	42.6	163.5	301.8	0.0	991.6	0.0	152.1	1155.9	0.0	0.0	255.2	3830
Oil Contaminated Soil	1543.3	7634.7	36.4	364.0	10246.8	0.0	2842.4	300.8	35424.6	2239.7	72.9	828.1	18851.1	6463.6	2482.9	2897.1	5207.9	146.2	5414.8	3247.0	6750.8	1198.6	200.6	34.5	59173.7	173602	
Process Residue	0.0	170.2	0.0	0.0	0.0	0.0	0.0	0.0	0.0	0.0	0.0	5.9	339.0	0.0	5.2	0.0	0.1	84.9	2556.6	0.4	1.9	0.0	0.0	0.0	0.0	3164	
Textiles	0.0	0.0	15.9	154.5	0.0	0.0	31.9	0.0	28.7	13.6	0.0	0.0	0.0	39.8	668.6	0.0	0.0	17.0	158.4	0.0	0.0	903.5	7.8	124.0	403.4	2567	
Wood Scraps	31.9	3285.9	19.5	212.4	528.7	0.4	0.0	79.6	373.9	84.0	234.5	3358.8	1095.6	63.0	772.5	1134.1	2831.0	236.6	547.3	27.4	783.0	1302.6	1617.3	0.1	20969.6	39589	
RECY MSW TONS	10745	22173	1783	31192	46468	279	2442	11569	4648	3748	2735	22888	13507	12708	25050	20619	22882	9937	11970	1204	35686	33310	4885	1381	59010	412819	
MSW TONS	19033	12319	2917	43945	92729	904	4857	3246	8884	7314	4554	24029	41876	25679	42890	34640	25269	10304	24104	5687	32389	22517	8907	4307	62774	566072	
MSW RATE (50%)	36%	64%	38%	42%	33%	24%	33%	78%	34%	34%	38%	49%	24%	33%	37%	37%	48%	49%	33%	17%	52%	60%	35%	24%	48%	42%	
RECY TOTAL TONS	25181	60653	1987	137068	166482	2291	15654	14810	54962	12867	5140	47728	62458	42054	105931	103756	59697	27194	463338	14581	74543	84604	18617	2429	316916	1920942	
ALL WASTE TONS	35542	20821	4986	56653	136432	1207	7412	4752	12872	13943	6926	41906	60433	41012	56639	48245	53048	14468	41865	10305	52513	50076	13910	5927	99324	890342	
TOTAL RATE (60%)	42%	74%	29%	71%	55%	65%	68%	76%	81%	48%	43%	53%	51%	51%	65%	68%	53%	65%	92%	59%	59%	63%	57%	29%	76%	68%	

NOTES:

1. Tonnages taken from Recycling Tonnage Grant reporting forms submitted by individual municipalities and reviewed NJ DEP.
2. Tonnages were adjusted based upon reports received by NJ DEP from ISRI/AMRA and other sources.
3. Recycling rates were calculated by NJDEP.
4. Note on Sayreville's high recycling rate: 128,229 of the total recycling tons was slag material and 262,000 was a one time construction project (concrete) number. Removing that tonnage would give Sayreville a total recycling rate of 64%.

Recy Total (60%) = All Recycling Tons, Recy Total (50%) = Non-bulky Recycling Tons
 Total (60%) = Recy Total(60%) Tons / (All Waste Tons + Recy Total(60%) Tons)
 Total (50%) = Recy Total(50%) Tons / (Waste Types 10 & 23 Tons + Recy Total(50%) Tons)